

WAAS CH 77736 W23A	APP CRS 242°	Rwy Ldg TDZE Apt Elev	4000 1180 1180
----------------------------------------	------------------------	-----------------------------	-------------------------------------------

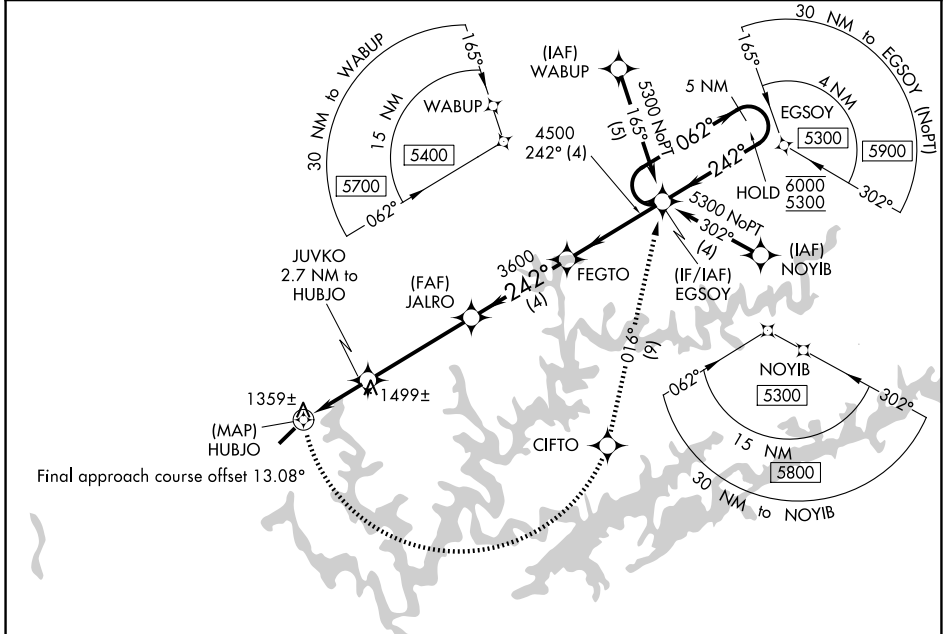
RNAV (GPS) RWY 23

COLONEL TOMMY C STINER AIRFIELD (JAU)

RNP APCH. MISSED APPROACH: Climbing left turn to 5300 direct CIFTO and on track 016° to EGSOY and hold, continue climb-in-hold to 5300.

▼ Circling NA northwest of Rwy 5-23.
Rwy 23 helicopter visibility reduction below 3/4 SM NA.

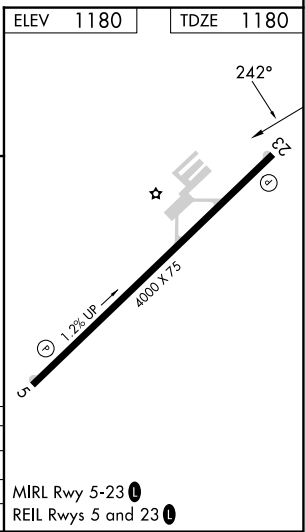
AWOS-3 124.975	ATLANTA CENTER 133.6 254.3	UNICOM 122.8 (CTAF) 0
--------------------------	--------------------------------------	---------------------------------



SE-1, 16 APR 2026 to 14 MAY 2026

SE-1, 16 APR 2026 to 14 MAY 2026

ELEV 1180		TDZE 1180																					
5300	CIFTO	tr 016°	EGSOY																				
Visual Segment - Obstacles.																							
<table border="1"> <tr> <td>JUVKO 2.7 NM to HUBJO</td> <td>JALRO</td> <td>FEGTO</td> <td>EGSOY</td> <td>5 NM Holding Pattern</td> </tr> <tr> <td>2220</td> <td>3600</td> <td>4500</td> <td>6000</td> <td>5300</td> </tr> <tr> <td>1.4 NM to HUBJO</td> <td></td> <td></td> <td></td> <td></td> </tr> <tr> <td>0.5</td> <td>1.4</td> <td>1.3</td> <td>4.3 NM</td> <td>4 NM</td> </tr> </table>				JUVKO 2.7 NM to HUBJO	JALRO	FEGTO	EGSOY	5 NM Holding Pattern	2220	3600	4500	6000	5300	1.4 NM to HUBJO					0.5	1.4	1.3	4.3 NM	4 NM
JUVKO 2.7 NM to HUBJO	JALRO	FEGTO	EGSOY	5 NM Holding Pattern																			
2220	3600	4500	6000	5300																			
1.4 NM to HUBJO																							
0.5	1.4	1.3	4.3 NM	4 NM																			
CATEGORY	A	B	C	D																			
LP MDA	1640-1	460 (500-1)		NA																			
LNVA MDA	1920-1	740 (800-1)		NA																			
CIRCLING	1920-1	740 (800-1)		NA																			



MIRL Rwy 5-23 0
REIL Rwy 5 and 23 0