

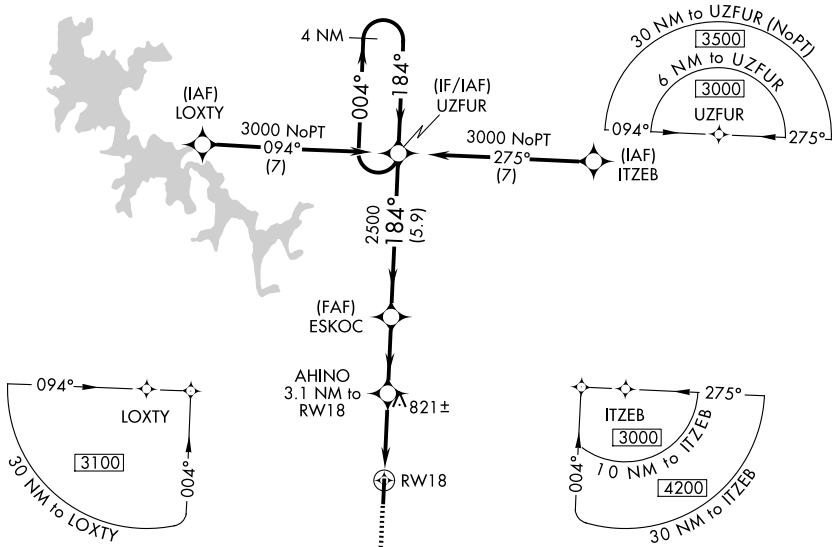
WAAS CH 48812 W18A	APP CRS 184°	Rwy Ldg TDZE Apt Elev	4750 609 614
--	------------------------	-----------------------------	---

RNAV (GPS) RWY 18

MURFREESBORO MUNI (MBT)

▼ For uncompensated Baro-VNAV systems, LNAV/VNAV NA below -16°C (4°F) or above 54°C (130°F). DME/DME RNP-0.3 NA. MISSED APPROACH: Climb to 3000 direct URACE and hold.

AWOS-3 133.975	NASHVILLE APP CON 118.4 360.7	GCO 135.075	UNICOM 123.075 (CTAF)
--------------------------	---	-----------------------	---------------------------------



SE-1, 16 APR 2026 to 14 MAY 2026

SE-1, 16 APR 2026 to 14 MAY 2026

ELEV 614	TDZE 609
----------	----------

MIRL Rwy 18-36
REIL Rws 18 and 36

MISSED APCH FIX
URACE

3000 URACE | VGSIs and descent angles not coincident (VGSi Angle 3.00/TCH 20). | 4 NM Holding Pattern UZFUR

3000
*1.4 NM to RW18
*1620
*LNAV only.
2500
2500
004° → 3000
← 184°

CATEGORY	A	B	C	D
LPV DA		859- ³ / ₄	250 (300- ³ / ₄)	NA
LNAV/VNAV DA		898- ⁷ / ₈	289 (300- ⁷ / ₈)	NA
LNAV MDA	1080-1	471 (500-1)	1080- ¹ / ₈ 471 (500- ¹ / ₈)	NA
CIRCLING	1080-1	466 (500-1)	1280- ¹ / ₄ 666 (700- ¹ / ₄)	NA

GP 3.00°
TCH 40