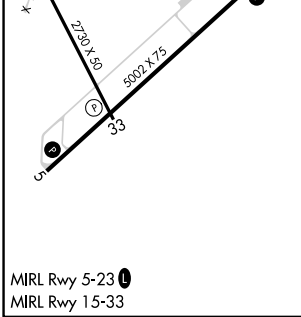
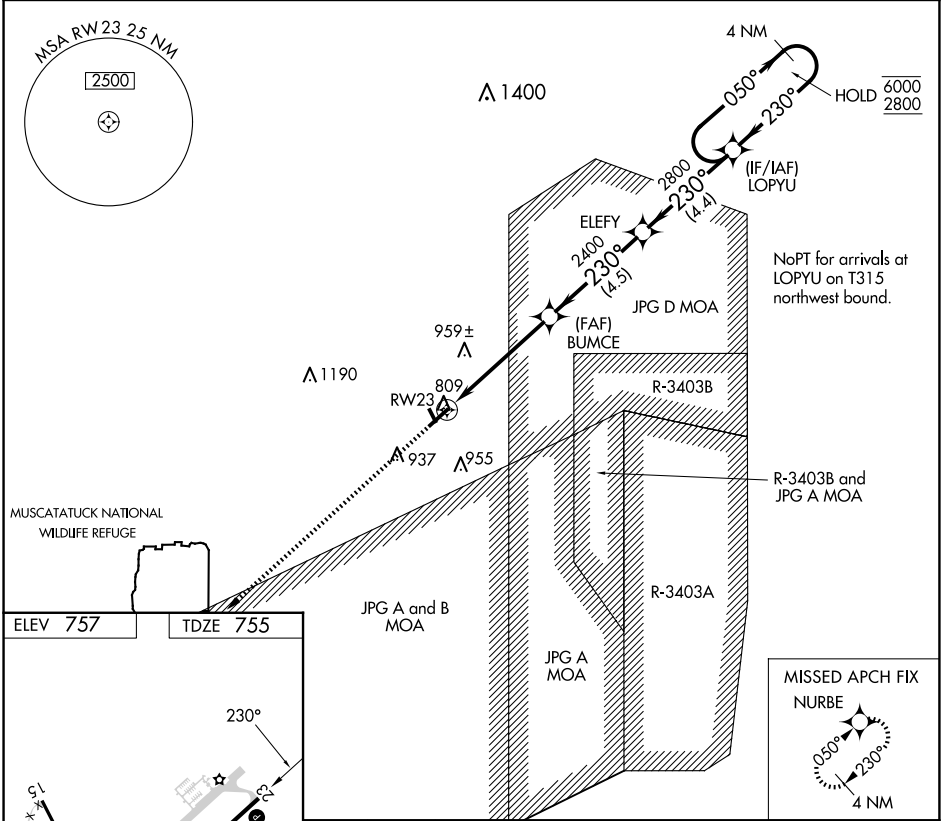


WAAS CH 63113 W23A	APP CRS 230°	Rwy Ldg TDZE Apt Elev	5002 755 757
--	------------------------	-----------------------------	---

RNAV (GPS) Z RWY 23

NORTH VERNON (OVO)

RNP APCH - GPS.		MISSED APPROACH: Climb to 2700 direct NURBE and hold.
<p>NA When local altimeter setting not received, use GEZ altimeter setting and increase LPV DA to 1089 feet all visibilities ¼ mile.</p>		
AWOS-3 120.625	INDIANAPOLIS APP CON 134.85 317.8	UNICOM 122.7 (CTAF) 0



2700	NURBE	VGSi and RNAV glidepath not coincident (VGSi Angle 3.00/TCH 27).		4 NM Holding Pattern
		ELEFY	LOPYU	
	BUMCE	ELEFY	LOPYU	
	2400	2800	2800	6000
	2300	2800	2800	2800
	2400			
	5 NM	4.5 NM	4.4 NM	
CATEGORY	A	B	C	D
LPV DA	1005-1 250 (300-1)			NA

EC-2, 16 APR 2026 to 14 MAY 2026

EC-2, 16 APR 2026 to 14 MAY 2026