

WAAS CH <b>77882</b> <b>W16A</b>	APP CRS <b>155°</b>	Rwy Ldg TDZE Apt Elev	<b>5310</b> <b>689</b> <b>689</b>
--	------------------------	-----------------------------	---

# RNAV (GPS) RWY 16

ABERNATHY FLD (GZS)

RNP APCH - GPS.

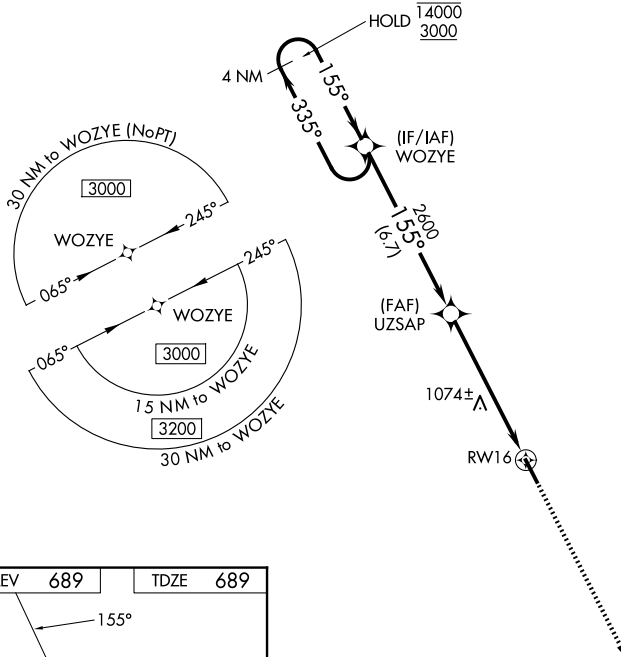
**▽** For uncompensated Baro-VNAV systems, LNAV/VNAV NA below -16°C or above 54°C.  
**▲ NA** Baro-VNAV and VDP NA when using MDQ altimeter setting. Rwy 16 helicopter visibility reduction below 3/4 SM NA. When local altimeter setting not received, use MDQ altimeter setting: increase LPV DA to 1245 feet, and all visibilities 1/4 SM; increase LNAV/VNAV DA to 1362 feet and all visibilities 1/8 SM; increase all MDAs 100 feet and LNAV visibility Cat B 1/4 SM, Cats C and D 1/8 SM, and Circling visibility Cats A and B 1/4 SM and Cat C 1/2 SM.

**MISSED APPROACH:**  
Climb to 3000 direct ZEWGU and hold.

AWOS-3  
**118.275**

MEMPHIS CENTER  
**125.85 379.25**

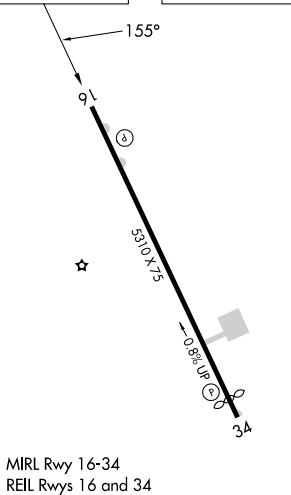
UNICOM  
**122.8 (CTAF)**



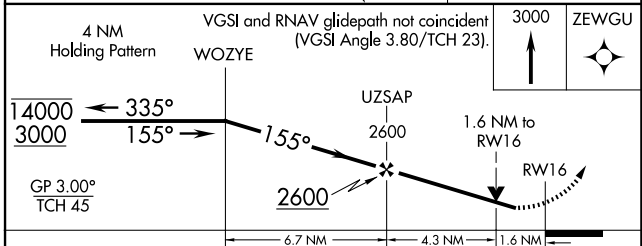
SE-1, 16 APR 2026 to 14 MAY 2026

SE-1, 16 APR 2026 to 14 MAY 2026

ELEV	<b>689</b>	TDZE	<b>689</b>
------	------------	------	------------



MIRL Rwy 16-34  
REL Rws 16 and 34



CATEGORY	A	B	C	D
LPV DA	1164-1 3/8 475 (500-1 3/8)			
LNAV/VNAV DA	1281-1 3/4 592 (600-1 3/4)			
LNAV MDA	1340-1	651 (700-1)	1340-1 7/8	651 (700-1 7/8)
CIRCLING	1420-1 731 (800-1)	1480-1 791 (800-1)	1480-2 1/4 791 (800-2 1/4)	1640-3 951 (1000-3)