

WAAS CH <b>99725</b> <b>W34A</b>	APP CRS <b>335°</b>	Rwy Ldg TDZE Apt Elev	<b>5010</b> <b>665</b> <b>689</b>
--	------------------------	-----------------------------	---

# RNAV (GPS) RWY 34

ABERNATHY FLD (GZS)

RNP APCH - GPS.

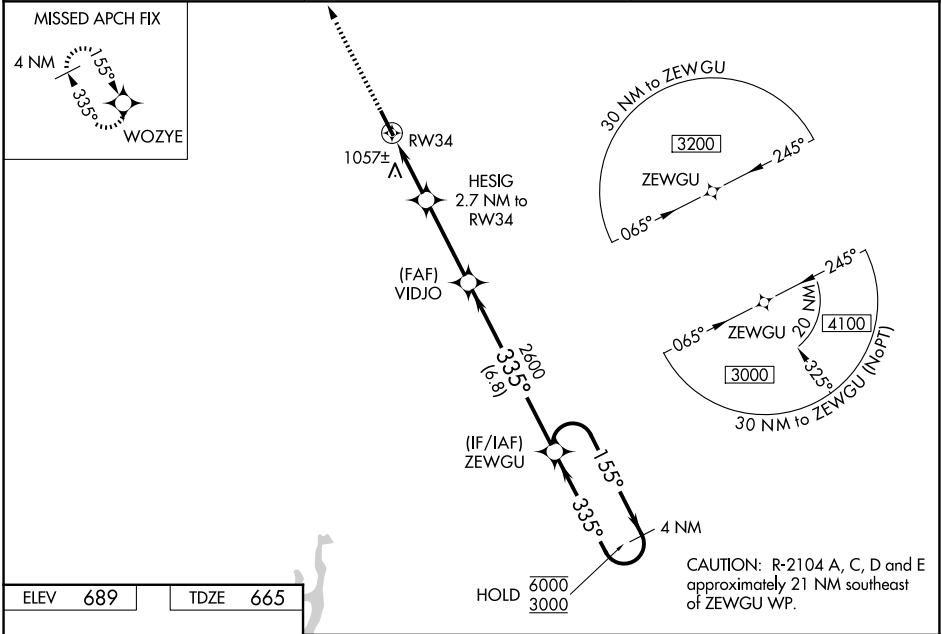
**NA** Baro-VNAV NA when using MDQ altimeter setting. For uncompensated Baro-VNAV systems, LNAV/VNAV NA below -16°C or above 54°C. Rwy 34 helicopter visibility reduction below ¾ SM NA. When local altimeter setting not received, use MDQ altimeter setting: increase LPV DA to 996 feet; increase LNAV/VNAV DA to 1524 feet and all visibilities 1½ SM; increase all MDAs 100 feet and LNAV visibility Cat B ¼ SM, Cats C and D ½ SM, and Circling visibility Cats A and B ¼ SM and Cat C ½ SM.

**MISSED APPROACH:**  
Climb to 3000 direct  
WOZYE and hold.

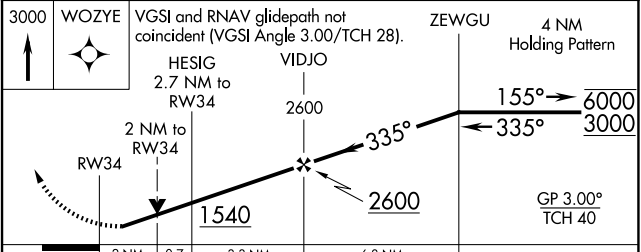
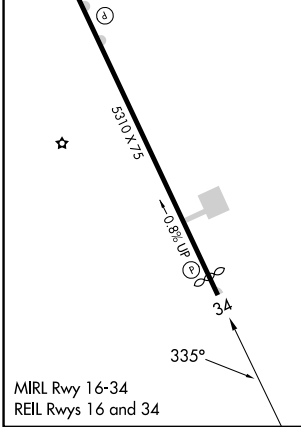
AWOS-3  
**118,275**

MEMPHIS CENTER  
**125.85 379.25**

UNICOM  
**122.8 (CTAF)**



ELEV	<b>689</b>	TDZE	<b>665</b>
------	------------	------	------------



CATEGORY	A	B	C	D
LPV DA	915-1 250 (300-1)			
LNAV/VNAV DA	1443-2½ 778 (800-2½)			
LNAV MDA	1320-1	655 (700-1)	1320-1⅞	655 (700-1⅞)
CIRCLING	1420-1 731 (800-1)	1480-1 791 (800-1)	1480-2¼ 791 (800-2¼)	1640-3 951 (1000-3)

SE-1, 16 APR 2026 to 14 MAY 2026

SE-1, 16 APR 2026 to 14 MAY 2026