

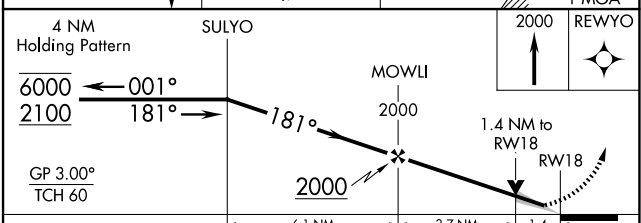
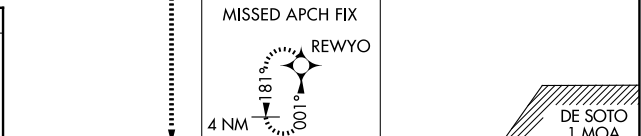
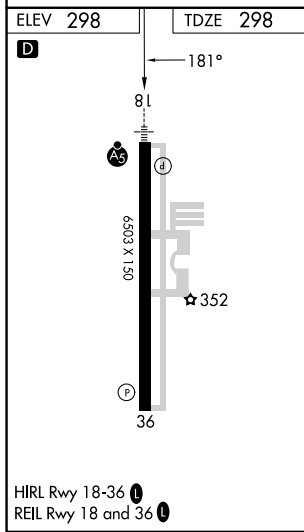
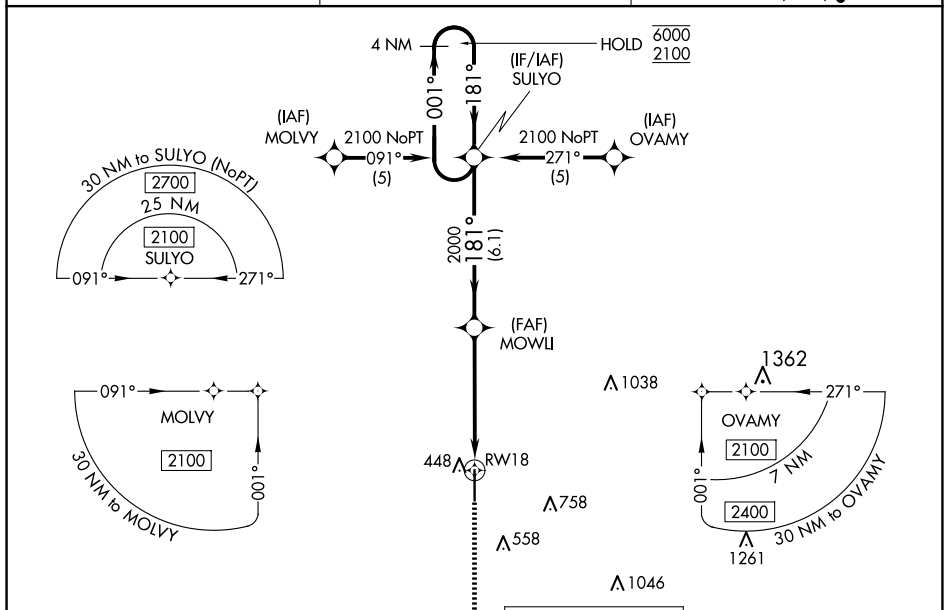
WAAS CH <b>49201</b> <b>W18A</b>	APP CRS <b>181°</b>	Rwy ldg TDZE Apt Elev	<b>6503</b> <b>298</b> <b>298</b>
--	------------------------	-----------------------------	---

# RNAV (GPS) RWY 18

HATTIESBURG/LAUREL RGNL (PIB)

RNP APCH-GPS.	MALSR	MISSED APPROACH: Climb to 2000 direct REWYO and hold.
For uncompensated Baro-VNAV systems, LNAV/VNAV NA below -15°C or above 54°C.		

AWOS-3PT <b>128.325</b>	HOUSTON CENTER <b>126.8 327.8</b>	UNICOM <b>123.0 (CTAF) 1</b>
----------------------------	--------------------------------------	---------------------------------



CATEGORY	A	B	C	D
LPV DA		498-1/2	200 (200-1/2)	
LNAV/VNAV DA		691-5/8	393 (400-3/8)	
LNAV MDA	820-1/2	522 (600-1/2)	820-1	522 (600-1)
<b>C</b> CIRCLING	820-1	522 (600-1)	1120-2 1/2 822 (900-2 1/2)	1120-2 3/4 822 (900-2 3/4)

SC-4, 16 APR 2026 to 14 MAY 2026

SC-4, 16 APR 2026 to 14 MAY 2026