

WAAS CH 70523 W28A	APP CRS 277°	Rwy Idg 3013 TDZE 237 Apt Elev 237
--	------------------------	---

RNAV (GPS) RWY 28

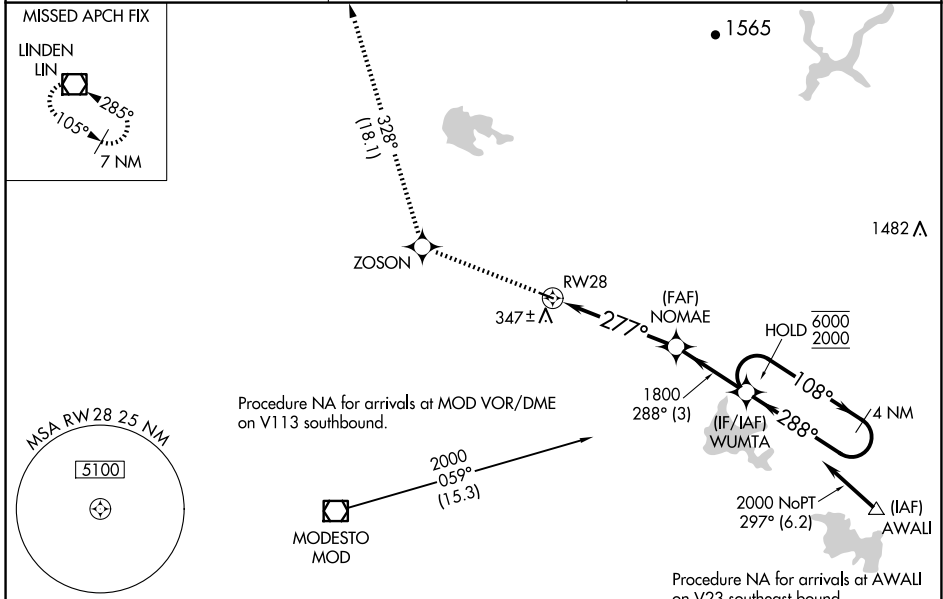
OAKDALE (O27)

RNP APCH-GPS.

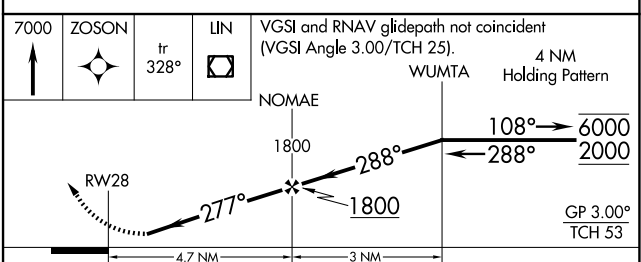
NA Rwy 28 helicopter visibility reduction below 3/4 SM NA. Baro-VNAV NA. Use Modesto altimeter setting; when not received, use Stockton altimeter setting; increase LPV DA to 581 feet and all visibilities 1/8 SM; increase LNAV/VNAV DA to 728 feet; increase all MDAs 40 feet.

MISSED APPROACH: Climb to 7000 direct ZOSON and on track 328° to LIN VOR/DME and hold, continue climb-in-hold to 7000.

MOD ASOS 127.7	NORCAL APP CON 125.1 363.2	UNICOM 122.8 (CTAF) 0
--------------------------	--------------------------------------	---------------------------------



ELEV 237	TDZE 237
----------	----------



CATEGORY	A	B	C	D
LPV DA		547-7/8	310 (400-7/8)	NA
LNAV/VNAV DA		694-13/8	457 (500-13/8)	NA
LNAV MDA	820-1	583 (600-1)	820-13/4 583 (600-13/4)	NA
C CIRCLING	820-1	583 (600-1)	920-2 683 (700-2)	NA

REIL Rwy 10 and 28
MIRL Rwy 10-28 0

OAKDALE, CALIFORNIA
Amdt 2A 02DEC21

37°45'N-120°48'W

RNAV (GPS) RWY 28

SW-2, 16 APR 2026 to 14 MAY 2026

SW-2, 16 APR 2026 to 14 MAY 2026