

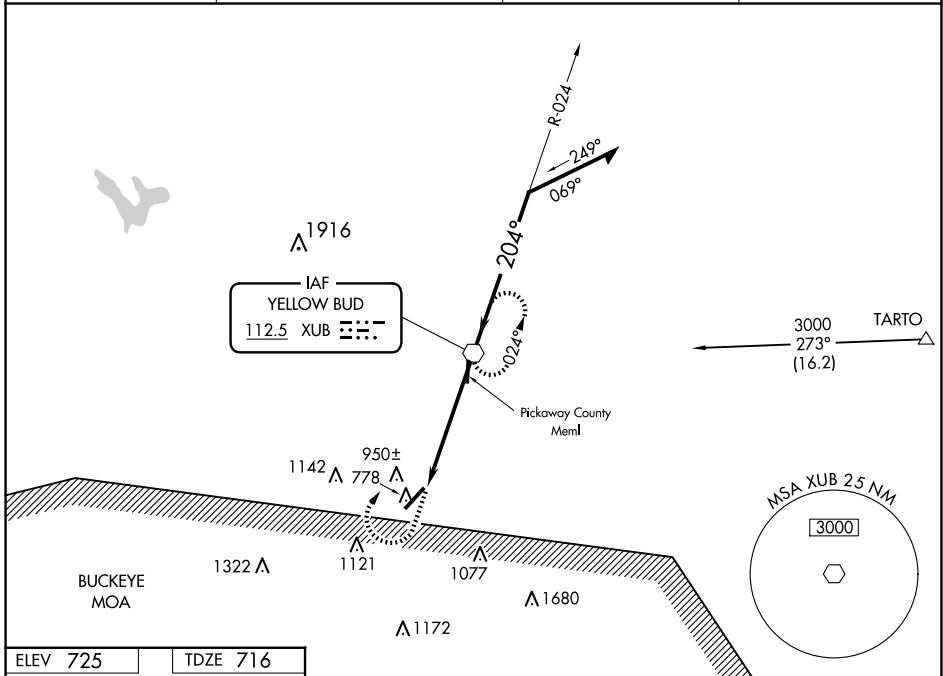
VOR XUB <b>112.5</b>	APP CRS <b>204°</b>	Rwy Idg <b>5405</b>
		TDZE <b>716</b>
		Apt Elev <b>725</b>

**VOR RWY 23**  
ROSS COUNTY (R/ZT)

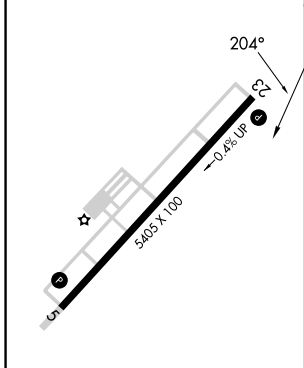
**NA** When local altimeter setting not received, use Rickenbacker Intl altimeter setting. When VGSI is inop, Straight-in and Circling Rwy 23 procedures NA at night.

**MISSED APPROACH:** Climb to 3000 then right turn direct XUB VOR and hold.

AWOS-3 <b>119.225</b>	COLUMBUS APP CON <b>134.0 279.6</b>	UNICOM <b>122.8 (CTAF)</b>	<b>123.0 0</b>
--------------------------	--	-------------------------------	----------------



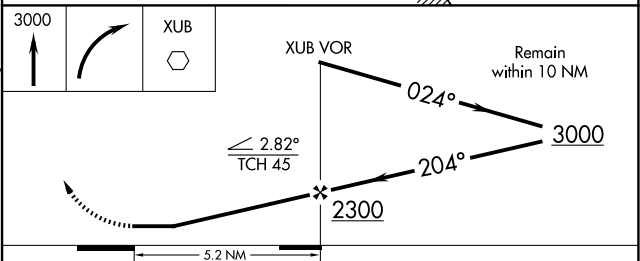
ELEV <b>725</b>	TDZE <b>716</b>
-----------------	-----------------



REIL Rwys 5 and 23 0  
MIRL Rwy 5-23 0

FAF to MAP 5.2 NM

Knots	60	90	120	150	180
Min:Sec	5:12	3:28	2:36	2:05	1:44



CATEGORY	A	B	C	D
S-23	1220-1	504 (500-1)	1220-1½	504 (500-1½)
CIRCLING	1340-1 615 (700-1)	1360-1 635 (700-1)	1500-2¼ 775 (800-2¼)	1540-2¾ 815 (900-2¾)
RICKENBACKER INTL ALTIMETER SETTING MINIMUMS				
S-23	1280-1	564 (600-1)	1280-1⅝	564 (600-1⅝)
CIRCLING	1400-1 675 (700-1)	1420-1 695 (700-1)	1560-2½ 835 (900-2½)	1600-2¾ 875 (900-2¾)

EC-2, 16 APR 2026 to 14 MAY 2026

EC-2, 16 APR 2026 to 14 MAY 2026