

WAAS CH 78122 W18A	APP CRS 183°	Rwy Ldg TDZE 228 Apt Elev 228	4001
----------------------------------------	------------------------	---------------------------------------------------	-------------

RNAV (GPS) RWY 18

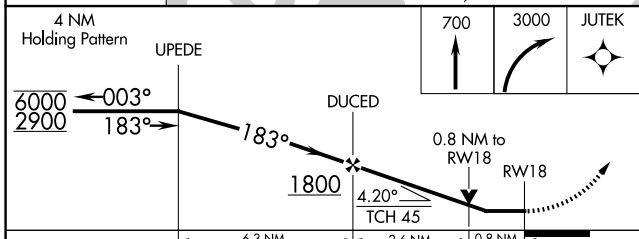
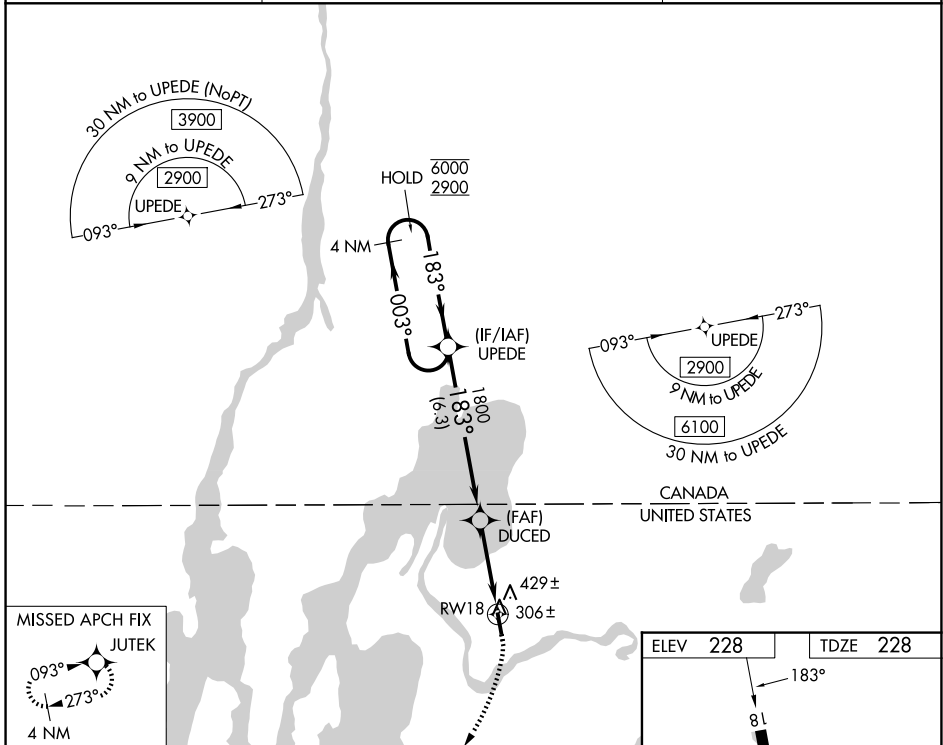
FRANKLIN COUNTY STATE (F'SO)

RNP APCH - GPS.

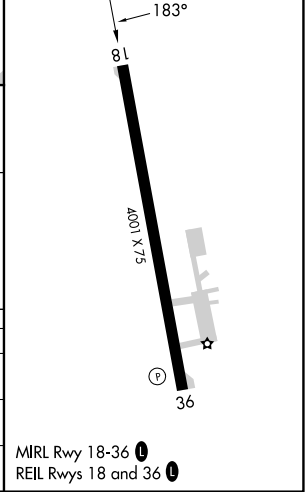
▼ Rwy 18 helicopter visibility reduction below $\frac{3}{4}$ SM NA. Circling Rwy 36 NA at night.
When local altimeter setting not received, use PBG altimeter setting and increase all MDAs 80 feet and Circling visibility Cat B $\frac{1}{4}$ SM. VDP NA when using PBG altimeter setting.

▲ MISSED APPROACH: Climb to 700 then climbing right turn to 3000 direct JUTEK and hold.

AWOS-3 119.025	BURLINGTON APP CON * 121.1 278.8 (E) 360.8 (W)	UNICOM 122.8 (CTAF) ①
--------------------------	---------------------------------------------------------------------------	----------------------------------------



ELEV 228	TDZE 228
-----------------	-----------------



CATEGORY	A	B	C	D
LP MDA	640-1	412 (500-1)		NA
LNAV MDA	680-1	452 (500-1)		NA
CIRCLING	780-1 552 (600-1)	960-1 732 (800-1)		NA

NE-1, 16 APR 2026 to 14 MAY 2026

NE-1, 16 APR 2026 to 14 MAY 2026