

WAAS CH 48900 W36A	APP CRS 003°	Rwy Ldg 4001 TDZE 228 Apt Elev 228
--	------------------------	---

RNAV (GPS) RWY 36

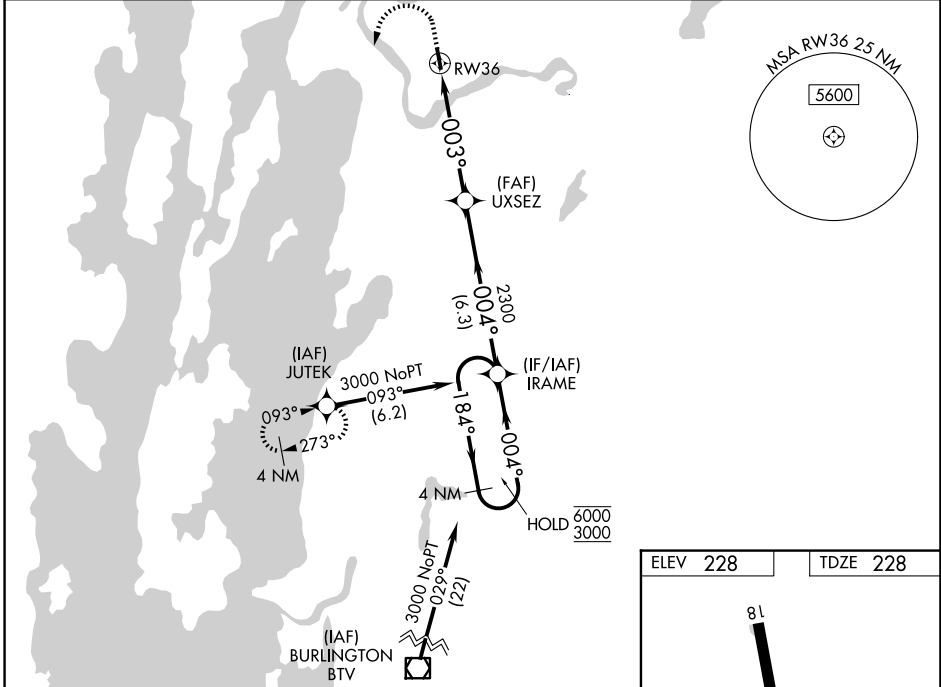
FRANKLIN COUNTY STATE (F'SO)

RNP APCH - GPS.

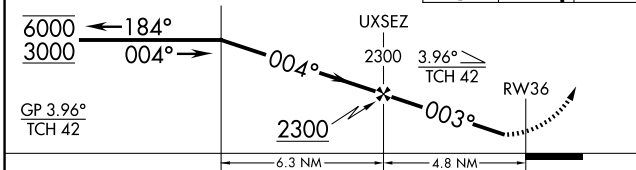
For uncompensated Baro-VNAV systems, LNAV/VNAV NA below -15°C or above 54°C. Rwy 36 helicopter visibility reduction below 1 SM NA. When local altimeter setting not received, use PBG altimeter setting and increase LPV DA to 635 feet and all visibilities 1/8 SM. Increase LNAV/VNAV DA to 984 feet; increase all MDAs 80 feet and LNAV visibility Cat B 1/4 SM, and Circling visibility Cat B 1/4 SM. Baro-VNAV NA when using PBG altimeter setting. Straight-in Rwy 36 NA at night, Circling Rwy 36 NA at night.

MISSED APPROACH: Climb to 1100, then climbing left turn to 3000 direct JUTEK and hold.

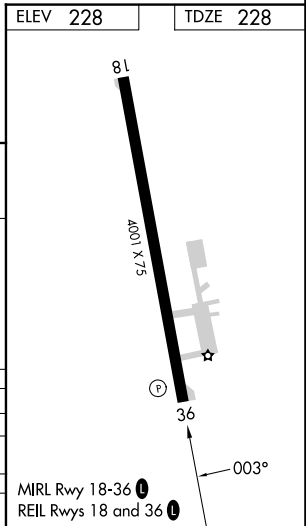
AWOS-3 119.025	BURLINGTON APP CON ★ 121.1 278.8 (E) 360.8 (W)	UNICOM 122.8 (CTAF) 📻
--------------------------	---	---------------------------------



VGSI and RNAV glidepath angle not coincident (VGSI Angle 3.00/TCH 42).
4 NM Holding Pattern IRAME



CATEGORY	A	B	C	D
LPV DA	571-1	343 (400-1)		NA
LNAV/VNAV DA	920-2	692 (700-2)		NA
LNAV MDA	920-1	692 (700-1)		NA
CIRCLING	920-1 692 (700-1)	960-1 732 (800-1)		NA



NE-1, 16 APR 2026 to 14 MAY 2026

NE-1, 16 APR 2026 to 14 MAY 2026