

WAAS CH <b>86547</b> <b>W13A</b>	APP CRS <b>129°</b>	Rwy Ldg TDZE Apt Elev	<b>4001</b> <b>1214</b> <b>1216</b>
--	------------------------	-----------------------------	---

# RNAV (GPS) RWY 13

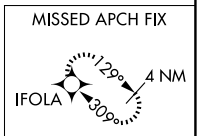
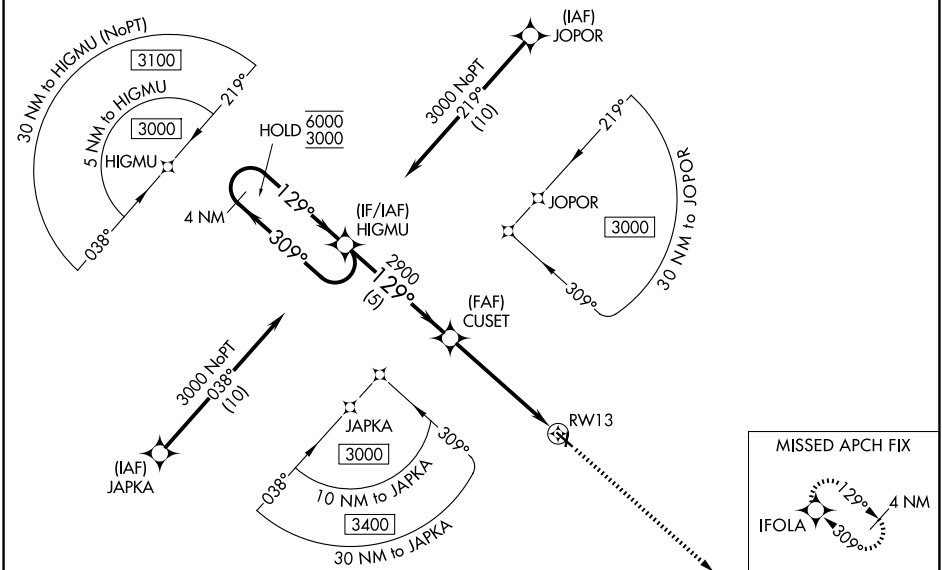
ALGONA MUNI (AXA)

RNP APCH - GPS.

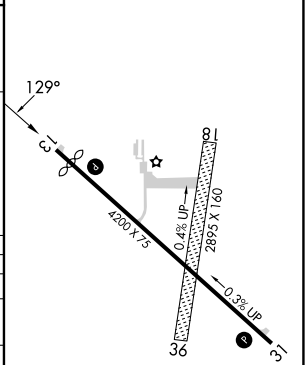
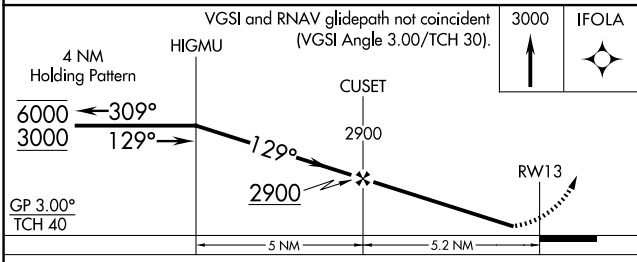
**⚠** Rwy 13 helicopter visibility reduction below 1 SM NA. For uncompensated Baro-VNAV systems, LNAV/VNAV NA below -17°C or above 54°C. Baro-VNAV NA when using FXY altimeter setting. Procedure NA at night. When local altimeter setting not received, use FXY altimeter setting and increase LPV DA to 1535 feet; increase LNAV/VNAV DA to 1668 feet and all visibilities 1/4 SM. Increase all MDAs 80 feet. Circling NA to Rwys 18 and 36.

MISSED APPROACH: Climb to 3000 direct IFOLA and hold.

AWOS-3 <b>118.475</b>	MINNEAPOLIS CENTER <b>134.0 288.3</b>	UNICOM <b>122.8 (CTAF)</b>
--------------------------	--	-------------------------------



ELEV 1216	TDZE 1214
-----------	-----------



CATEGORY	A	B	C	D
LPV DA	1464-1	250 (300-1)		NA
LNAV/VNAV DA	1597-1 1/8	383 (400-1 1/8)		NA
LNAV MDA	1740-1	486 (500-1)		NA
CIRCLING	1740-1 524 (600-1)	1800-1 584 (600-1)		NA

MIRL Rwy 13-31  
REIL Rws 13 and 31

NC-3, 16 APR 2026 to 14 MAY 2026

NC-3, 16 APR 2026 to 14 MAY 2026