

WAAS CH 82235 W36A	APP CRS 001°	Rwy Ldg TDZE Apt Elev	5000 804 823
--	------------------------	-----------------------------	---

RNAV (GPS) RWY 36

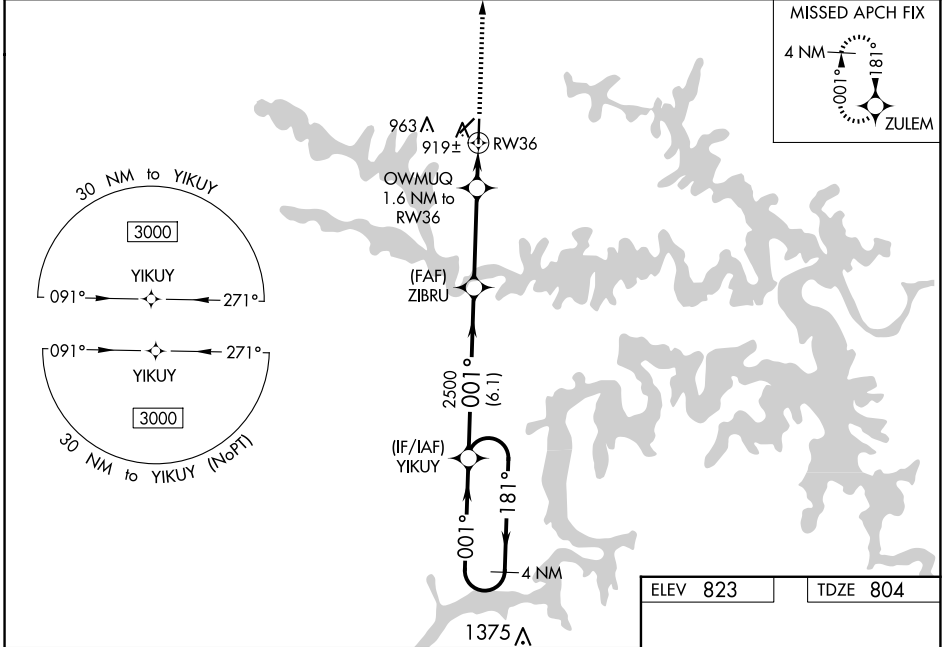
CLINTON RGNL (GLY)

RNP APCH.

⚠ Baro-VNAV NA when using Whiteman AFB altimeter setting. For uncompensated Baro-VNAV systems, LNAV/VNAV NA below -16°C or above 54°C. Circling Rwy 4 NA at night. When local altimeter setting not received, use Whiteman AFB altimeter setting and increase all DA 61 feet and all MDA 80 feet, increase visibility LNAV Cats C/D 3/8 mile, LNAV/VNAV all Cats and Circling Cat D 1/4 mile. VDP NA with Whiteman AFB altimeter setting.

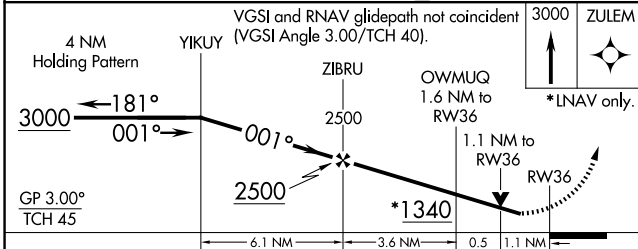
MISSED APPROACH:
Climb to 3000 direct ZULEM and hold.

AWOS-3PT 120.475	WHITEMAN APP CON ★ 127.45	UNICOM 122.8 (CTAF) 0
----------------------------	-------------------------------------	--

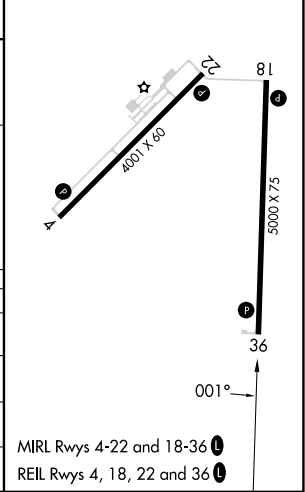


NC-3, 16 APR 2026 to 14 MAY 2026

NC-3, 16 APR 2026 to 14 MAY 2026



ELEV 823	TDZE 804
----------	----------



CATEGORY	A	B	C	D
LPV DA		1054-1	250 (300-1)	
LNAV/VNAV DA		1101-1	297 (300-1)	
LNAV MDA	1260-1	456 (500-1)	1260-1 3/8	456 (500-1 3/8)
C CIRCLING	1280-1 457 (500-1)	1300-1 477 (500-1)	1340-1 1/2 517 (600-1 1/2)	1480-2 657 (700-2)