

WAAS CH <b>49136</b> <b>W19A</b>	APP CRS <b>175°</b>	Rwy Ldg TDZE Apt Elev	<b>4119</b> <b>1024</b> <b>1024</b>
----------------------------------------	------------------------	-----------------------------	-------------------------------------------

# RNAV (GPS) RWY 19

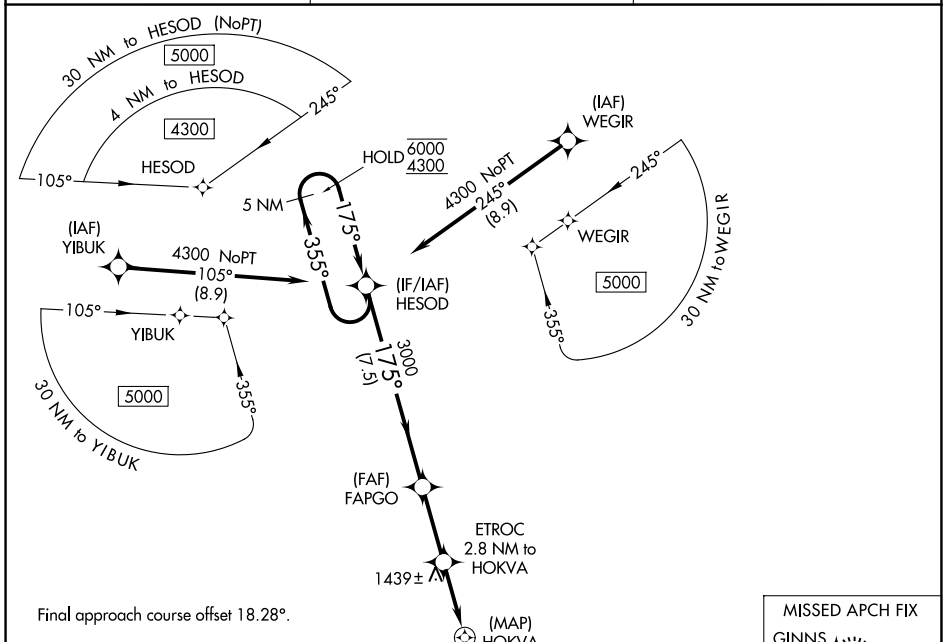
LT WARREN EATON (OIC)

RNP APCH.

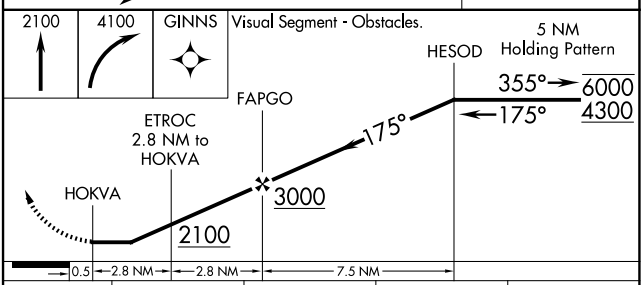
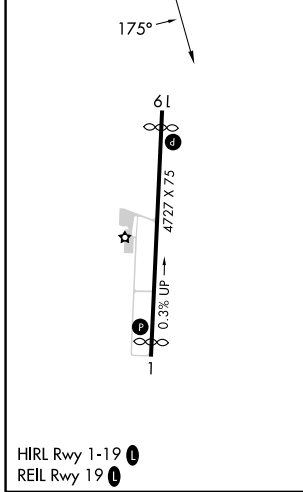
When local altimeter setting not received, procedure NA. Straight-in Rwy 19 NA at night, Circling Rwy 19 NA at night. Rwy 19 helicopter visibility reduction 1 SM NA.

MISSED APPROACH: Climb to 2100 then climbing right turn to 4100 direct GINNS and hold.

AWOS-3 <b>119.025</b>	BOSTON CENTER <b>133.25 279.5</b>	UNICOM <b>122.8 (CTAF) 0</b>
--------------------------	--------------------------------------	---------------------------------



ELEV 1024	<b>D</b>	TDZE 1024
-----------	----------	-----------



CATEGORY		A	B	C	D
LP	MDA	1700-1	676 (700-1)	1700-1 $\frac{7}{8}$	676 (700-1 $\frac{7}{8}$ )
	LNAV MDA	2040-1 $\frac{1}{4}$ 1016 (1100-1 $\frac{1}{4}$ )	2040-1 $\frac{1}{2}$ 1016 (1100-1 $\frac{1}{2}$ )	2040-3	1016 (1100-3)
	CIRCLING	2060-1 $\frac{1}{4}$ 1036 (1100-1 $\frac{1}{4}$ )	2160-1 $\frac{1}{2}$ 1136 (1200-1 $\frac{1}{2}$ )	2240-3 1216 (1300-3)	2520-3 1496 (1500-3)

NE-2, 16 APR 2026 to 14 MAY 2026

NE-2, 16 APR 2026 to 14 MAY 2026