

WAAS CH <b>42844</b> <b>W01A</b>	APP CRS <b>014°</b>	Rwy Ldg <b>5201</b> TDZE <b>835</b> Apt Elev <b>835</b>
----------------------------------------	------------------------	---------------------------------------------------------------

# RNAV (GPS) RWY 1

GRANBURY RGNL (G.D.J)

RNP APCH - GPS.

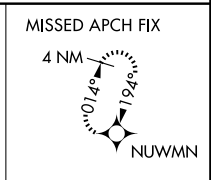
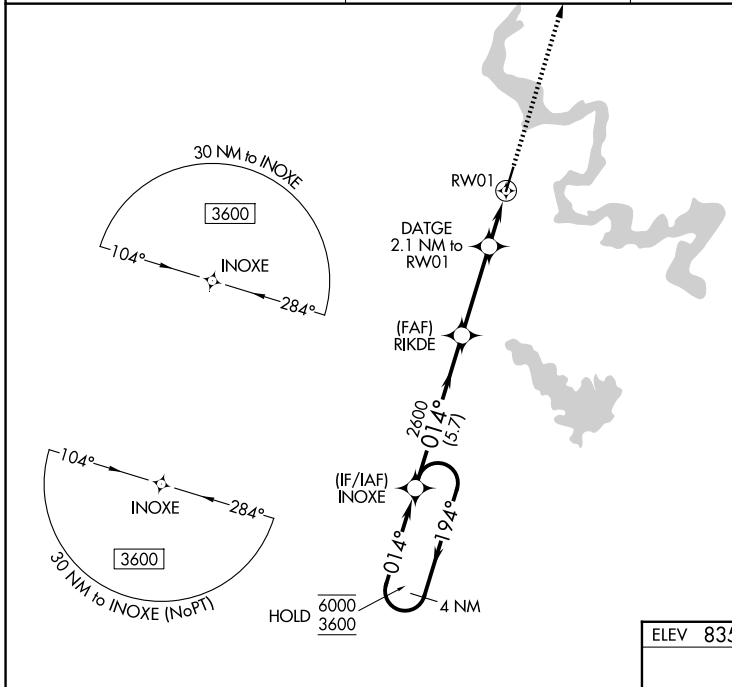
▼ Rwy 1 helicopter visibility reduction below 3/4 SM NA. For uncompensated Baro-VNAV systems, LNAV/VNAV NA below -16°C or above 54°C.

MISSED APPROACH: Climb to 3600 direct NUWMN and hold, continue climb-in-hold to 3600.

AWOS-3T  
**118,925**

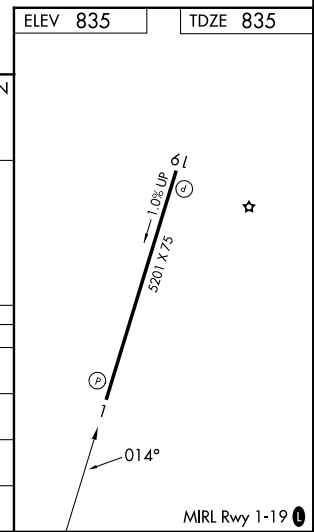
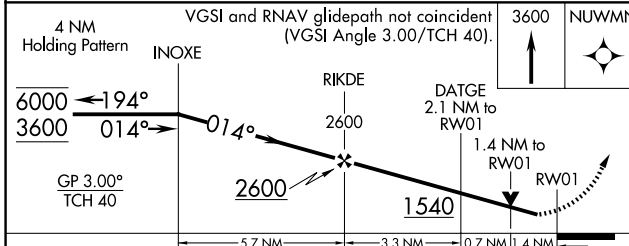
FORT WORTH CENTER  
**135,375 354,05**

UNICOM  
**123.0 (CTAF) 0**



SC-2, 16 APR 2026 to 14 MAY 2026

SC-2, 16 APR 2026 to 14 MAY 2026



CATEGORY	A	B	C	D
LPV DA	1139-7/8	304 (400-7/8)		NA
LNAV/VNAV DA	1320-13/8	485 (500-13/8)		NA
LNAV MDA	1320-1	485 (500-1)	1320-13/8 485 (500-13/8)	NA
CIRCLING	1360-1 525 (600-1)	1380-1 545 (600-1)	1680-2 1/2 845 (900-2 1/2)	NA