

WAAS CH <b>81935</b> <b>W26A</b>	APP CRS <b>259°</b>	Rwy Idg TDZE Apt Elev	<b>4051</b> <b>696</b> <b>698</b>
--	------------------------	-----------------------------	---

# RNAV (GPS) RWY 26

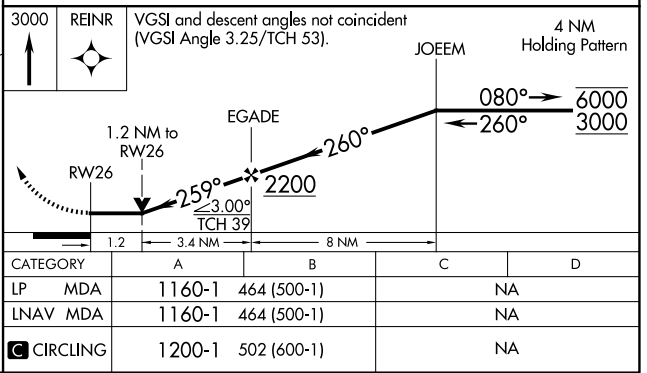
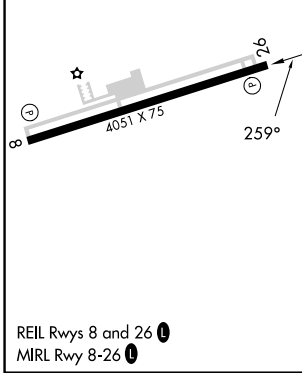
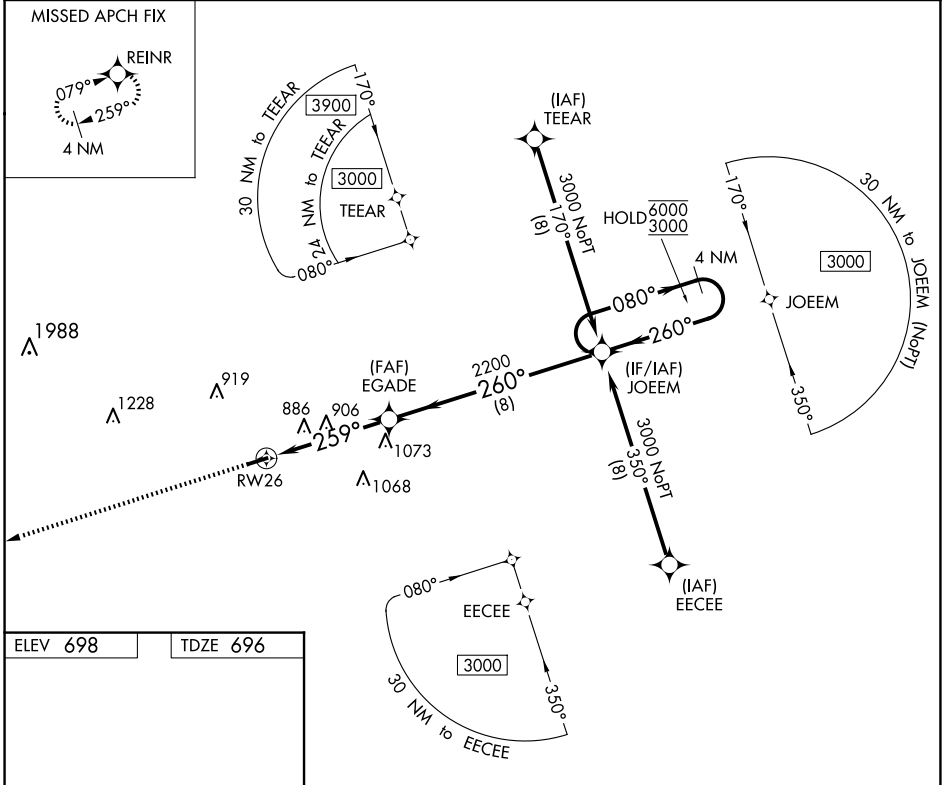
LAURENS COUNTY (LUX)

RNP APCH-GPS.

▼ Rwy 26 helicopter visibility reduction below 3/4 SM NA.

MISSED APPROACH: Climb to 3000 direct REINR and hold.

AWOS-3 <b>123.975</b>	GREER APP CON ★ <b>120.6 350.2</b>	UNICOM <b>122.8 (CTAF) 0</b>
--------------------------	---------------------------------------	---------------------------------



SE-2, 16 APR 2026 to 14 MAY 2026

SE-2, 16 APR 2026 to 14 MAY 2026