

WAAS CH <b>72635</b> <b>W08A</b>	APP CRS <b>079°</b>	Rwy Idg <b>4051</b> TDZE <b>698</b> Apt Elev <b>698</b>
--	------------------------	---

# RNAV (GPS) RWY 8

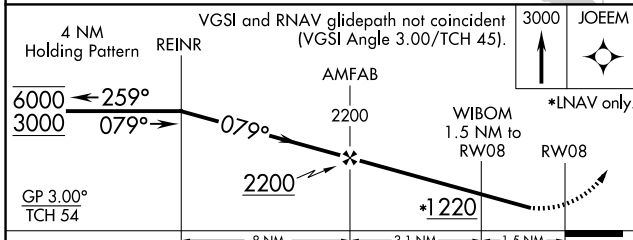
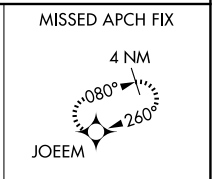
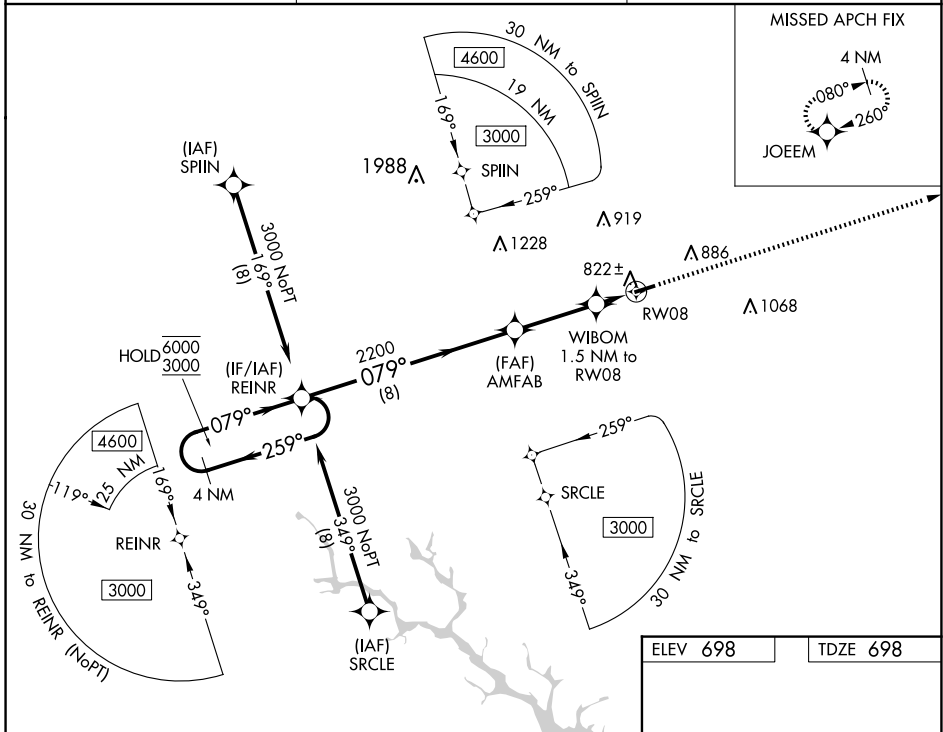
LAURENS COUNTY (LUX)

RNP APCH-GPS.

▼ Rwy 8 helicopter visibility reduction below 3/4 SM NA.  
For uncompensated Baro-VNAV systems, LNAV/VNAV NA below -16°C or above 54°C.

MISSED APPROACH: Climb to 3000 direct JOEEM and hold.

AWOS-3 <b>123.975</b>	GREER APP CON ★ <b>120.6 350.2</b>	UNICOM <b>122.8 (CTAF) 0</b>
--------------------------	---------------------------------------	---------------------------------



ELEV 698	TDZE 698
----------	----------

REIL Rwy 8 and 26 0  
MIRL Rwy 8-26 0

CATEGORY	A	B	C	D
LPV DA	948-3/4	250 (300-3/4)		NA
LNAV/VNAV DA	957-3/4	259 (300-3/4)		NA
LNAV MDA	1080-1	382 (400-1)		NA
<b>C</b> CIRCLING	1200-1	502 (600-1)		NA

SE-2, 16 APR 2026 to 14 MAY 2026

SE-2, 16 APR 2026 to 14 MAY 2026