

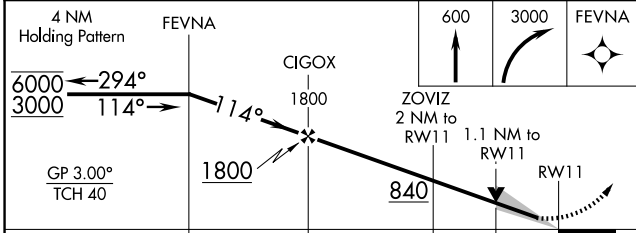
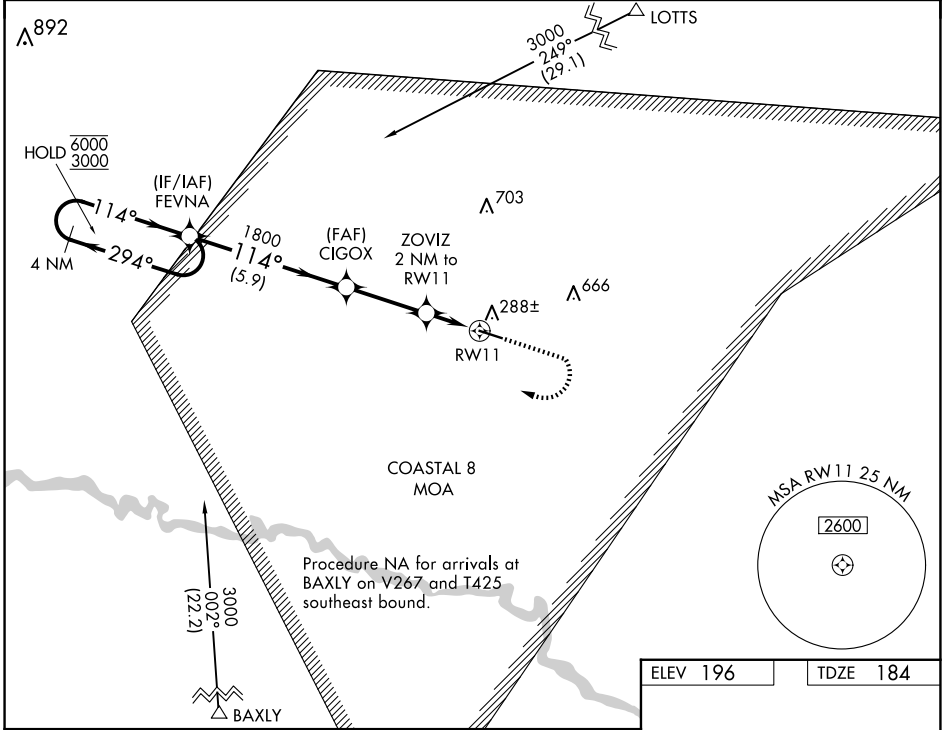
WAAS CH 40227 W11A	APP CRS 114°	Rwy Ldg TDZE Apt Elev	5003 184 196
--	------------------------	-----------------------------	---

RNAV (GPS) RWY 11

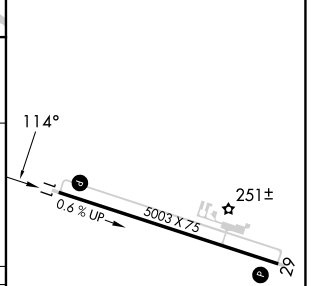
SWINTON SMITH FLD AT REIDSVILLE MUNI (R.VJ)

RNP APCH - GPS.	MISSED APPROACH: Climb to 600 then climbing right turn to 3000 direct FEVNA and hold, continue climb-in-hold to 3000.
▼ For uncompensated Baro-VNAV systems, LNAV/VNAV NA below -15°C or above 54°C.	

AWOS-3PT 128.325	JACKSONVILLE CENTER 127.575 269.025	CTAF 122.9
----------------------------	---	----------------------



ELEV 196	TDZE 184
----------	----------



CATEGORY	A	B	C	D
LPV DA		384- ³ / ₄	200 (200- ³ / ₄)	
LNAV/VNAV DA		457- ⁷ / ₈	273 (300- ⁷ / ₈)	
LNAV MDA		540-1	356 (400-1)	
C CIRCLING	620-1 424 (500-1)	680-1 484 (500-1)	860-1 ³ / ₄ 664 (700-1 ³ / ₄)	1020-2 ³ / ₄ 824 (900-2 ³ / ₄)

MIRL Rwy 11-29

SE-4, 16 APR 2026 to 14 MAY 2026

SE-4, 16 APR 2026 to 14 MAY 2026