

WAAS CH 42547 W29A	APP CRS 294°	Rwy Ldg TDZE Apt Elev	5003 196 196
--	------------------------	-----------------------------	---

RNAV (GPS) RWY 29

SWINTON SMITH FLD AT REIDSVILLE MUNI (R.VJ)

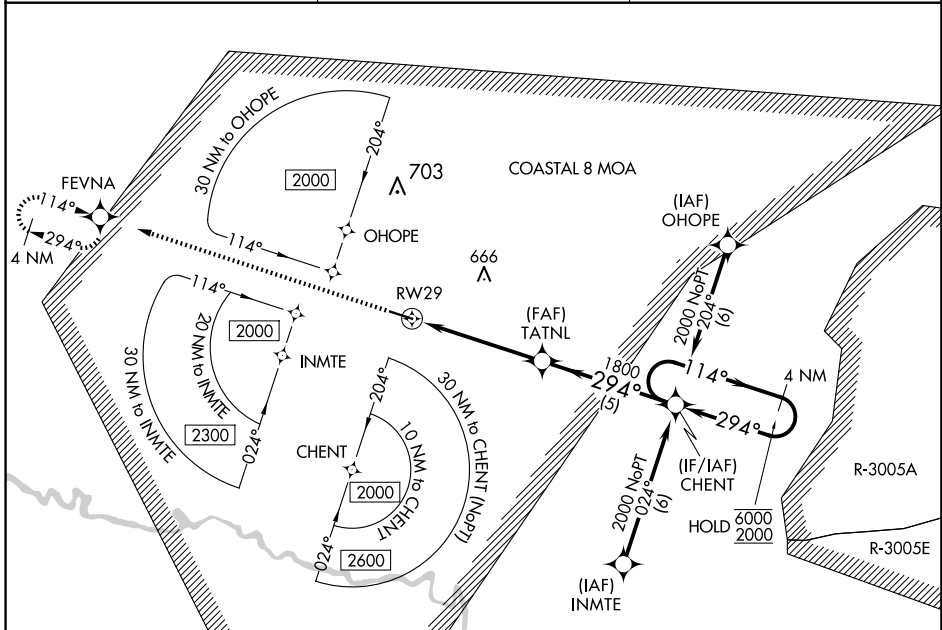
RNP APCH - GPS.

RADAR required for procedure entry when R-3005 A/B/C/E active.

MISSED APPROACH: Climb to 3000 direct FEVNA and hold, continue climb-in-hold to 3000.

▼ Rwy 29 helicopter visibility reduction below 3/4 SM NA. For uncompensated Baro-VNAV systems, △ LNAV/VNAV NA below -15°C or above 54°C. Hold-in-lieu NA when R-3005 A/B/C/E active.

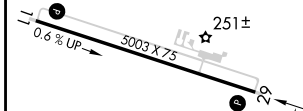
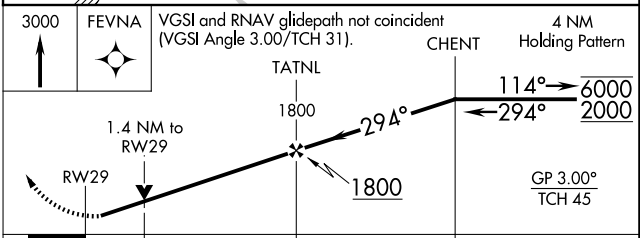
AWOS-3PT 128.325	JACKSONVILLE CENTER 127.575 269.025	CTAF 122.9
----------------------------	---	----------------------



SE-4, 16 APR 2026 to 14 MAY 2026

SE-4, 16 APR 2026 to 14 MAY 2026

ELEV 196	TDZE 196
----------	----------



CATEGORY	A	B	C	D
LPV DA		446-3/4	250 (300-3/4)	
LNAV/VNAV DA		584-1 1/8	388 (400-1 1/8)	
LNAV MDA	660-1	464 (500-1)	660-1 3/8	464 (500-1 1/8)
CIRCLING	660-1	464 (500-1)	860-1 3/4 664 (700-1 3/4)	1020-2 3/4 824 (900-2 3/4)