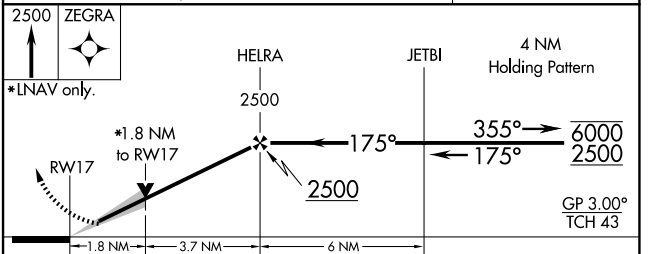
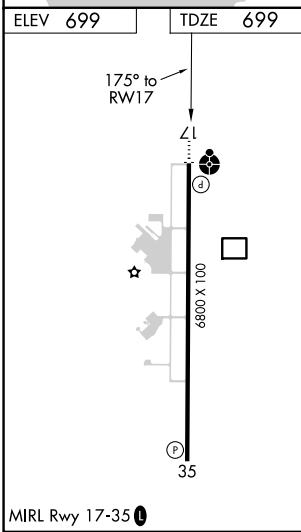
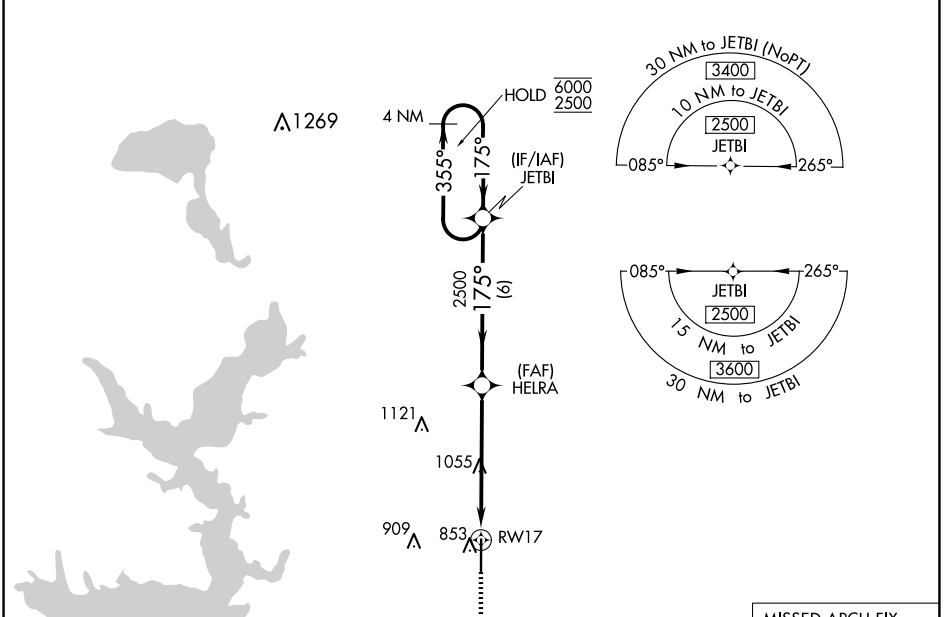


WAAS CH <b>99518</b> <b>W17A</b>	APP CRS <b>175°</b>	Rwy Idg TDZE Apt Elev	<b>6800</b> <b>699</b> <b>699</b>
--	------------------------	-----------------------------	---

# RNAV (GPS) RWY 17

DURANT RGNL/EAKER FLD (DUA)

RNP APCH.		ODALS	MISSED APPROACH: Climb to 2500 direct ZEGRA and hold.
<p><b>▼</b> Inop table does not apply to LPV and LNAV Cat C. For uncompensated Baro-VNAV systems, LNAV/VNAV NA below -16°C or above 54°C. For inop ALS, increase LNAV/VNAV Cat A/B visibility to 1 1/4 SM.</p>			
AWOS-3 <b>124.175</b>	FORT WORTH CENTER <b>124.75 323.0</b>	UNICOM <b>123.05 (CTAF) 0</b>	



CATEGORY	A	B	C	D
LPV DA	899-3/4	200 (200-3/4)		NA
LNAV/VNAV DA	1133-1 1/8	434 (500-1 1/8)		NA
LNAV MDA	1320-3/4 621 (700-3/4)		1320-1 3/4 621 (700-1 3/4)	NA

SC-1, 16 APR 2026 to 14 MAY 2026

SC-1, 16 APR 2026 to 14 MAY 2026