

APP CRS	Rwy Ldg	<b>5659</b>
<b>324°</b>	TDZE	<b>315</b>
	Apt Elev	<b>316</b>

# RNAV (GPS) RWY 33

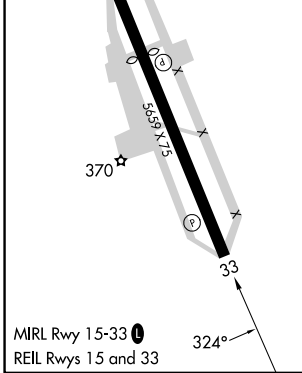
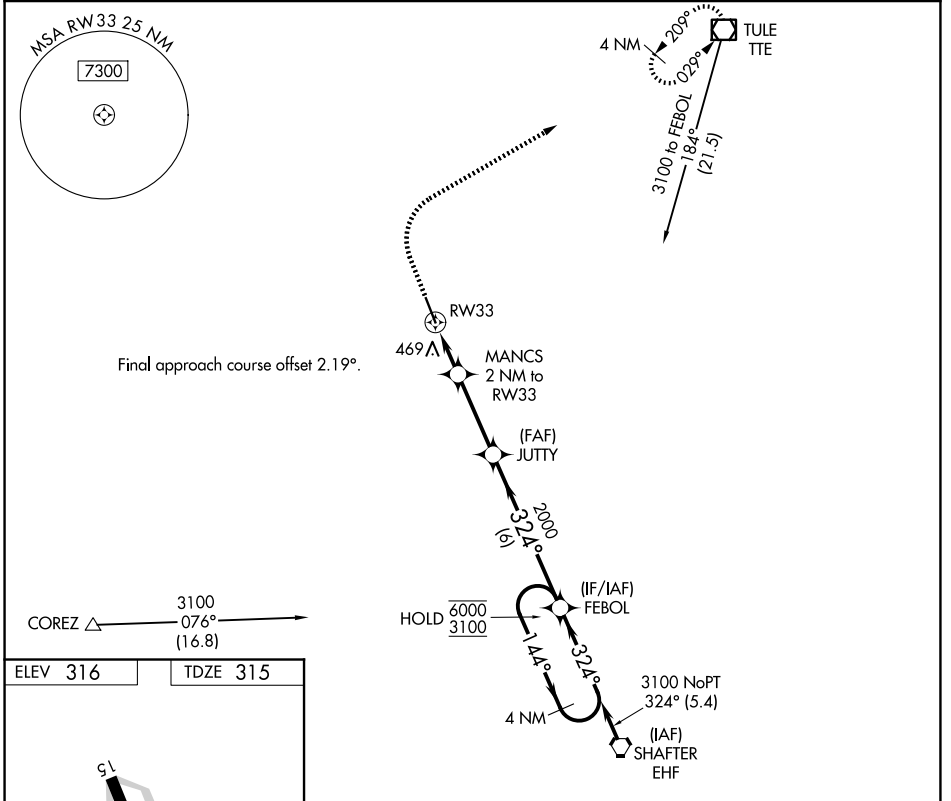
DELANO MUNI (DLO)

RNP APCH - GPS.

⚠ Circling NA southwest of Rwy 15-33.  
 ⚠ When local altimeter setting not received, procedure NA.

MISSED APPROACH: Climb to 800 then climbing right turn to 3100 direct TTE VOR/DME and hold.

AWOS-3P <b>119.55</b>	BAKERSFIELD APP CON ★ <b>118.9</b>	UNICOM <b>122.8 (CTAF)</b>
--------------------------	---------------------------------------	-------------------------------



800	3100	TTE	VGSi and descent angles not coincident (VGSi Angle 3.00/TCH 26).	
MANCS 2 NM to RWY 33		JUTTY	FEBOL	4 NM Holding Pattern
RWY 33		1.2 NM to RWY 33	≤ 3.00° TCH 40	144° → 6000
1000		2000	324°	← 324° 3100
1.2 NM		0.9 NM	3.1 NM	6 NM
CATEGORY	A	B	C	D
LNAV MDA	720-1	405 (500-1)	720-1½	405 (500-1½)
CIRCLING	760-1	780-1	820-1½	960-2
	444 (500-1)	464 (500-1)	504 (600-1½)	644 (700-2)

SW-3, 16 APR 2026 to 14 MAY 2026

SW-3, 16 APR 2026 to 14 MAY 2026