

VORTAC EHF <b>115.4</b> Chan <b>101</b>	APP CRS <b>322°</b>	Rwy Ldg TDZE <b>315</b> Apt Elev <b>316</b>
---	------------------------	---

# VOR RWY 33

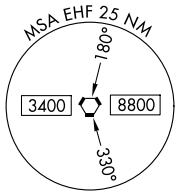
DELANO MUNI (DLO)

DME required.

⚠ Circling NA southwest of Rwy 15-33.  
⚠ When local altimeter setting not received, procedure NA.

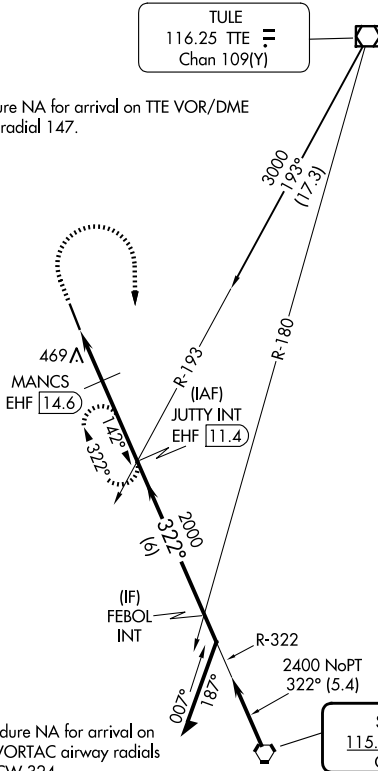
MISSED APPROACH: Climb to 1200 then climbing right turn to 2400 on EHF VORTAC R-322 to JUTTY INT/EHF 11.4 DME and hold, continue climb-in-hold to 2400.

AWOS-3P <b>119.55</b>	BAKERSFIELD APP CON* <b>118.9</b>	UNICOM <b>122.8</b> (CTAF) <b>0</b>
--------------------------	--------------------------------------	--



TULE  
116.25 TTE =  
Chan 109(Y)

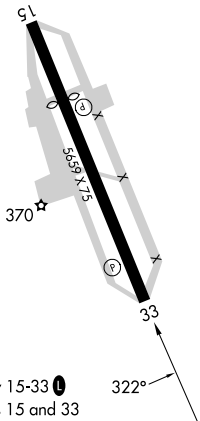
Procedure NA for arrival on TTE VOR/DME airway radial 147.



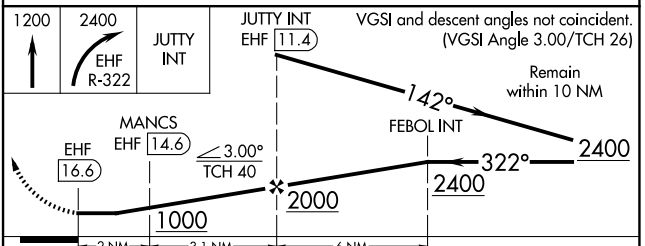
Procedure NA for arrival on EHF VORTAC airway radials 269 CW 324.

IAF  
SHAFTER  
115.4 EHF  
Chan 101

ELEV 316	TDZE 315
----------	----------



MIRL Rwy 15-33 **0**  
REIL Rwy 15 and 33



CATEGORY	A	B	C	D
S-33	860-1 545 (600-1)		860-1½ 545 (600-1½)	
CIRCLING	860-1 544 (600-1)		860-1½ 544 (600-1½)	960-2 644 (700-2)