

APP CRS	Rwy Idg	4429
234°	TDZE	823
	Apt Elev	833

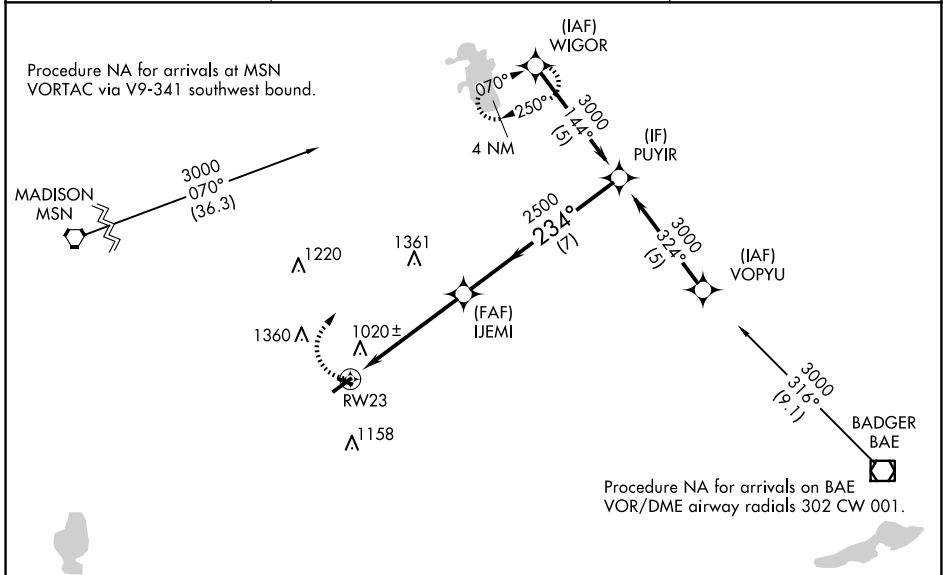
RNAV (GPS) RWY 23

WATERTOWN MUNI (RYV)

⚠ Rwy 23 helicopter visibility reduction below 1 SM NA. DME/DME RNP-0.3 NA. When local altimeter setting not received, use Dodge County altimeter setting and increase all MDAs 60 feet, increase LNAV Cat C and D visibility $\frac{1}{8}$ SM. Straight-in Rwy 23 NA at night, Circling Rwy 23 NA at night.

⚠ MISSED APPROACH: Climbing right turn to 3000 direct WIGOR and hold.

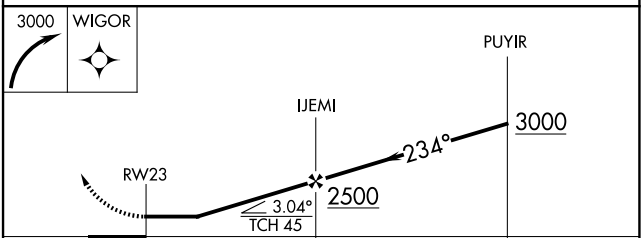
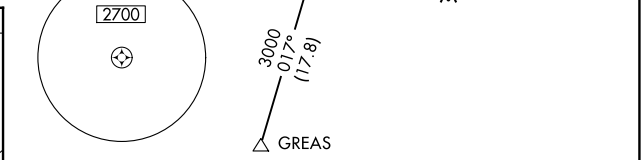
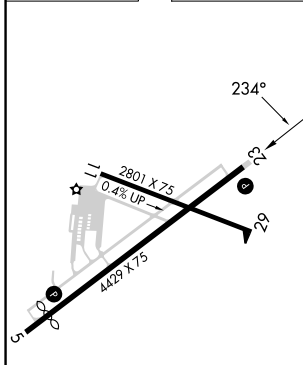
AWOS-3 119.975	MADISON APP CON * 119.15 343.7	UNICOM 122.8 (CTAF)
--------------------------	--	-------------------------------



Procedure NA for arrivals at MSN VORTAC via V9-341 southwest bound.

Procedure NA for arrivals on BAE VOR/DME airway radials 302 CW 001.

ELEV 833	D	TDZE 823
----------	----------	----------



CATEGORY	A	B	C	D
LNAV MDA	1420-1 597 (600-1)		1420-1 $\frac{3}{4}$ 597 (600-1 $\frac{3}{4}$)	
CIRCLING	1420-1 587 (600-1)	1440-1 607 (700-1)	1720-2 $\frac{3}{4}$ 887 (900-2 $\frac{3}{4}$)	1720-3 887 (900-3)

EC-3, 16 APR 2026 to 14 MAY 2026

EC-3, 16 APR 2026 to 14 MAY 2026