

APP CRS	Rwy Idg	<b>2801</b>
<b>293°</b>	TDZE	<b>833</b>
	Apt Elev	<b>833</b>

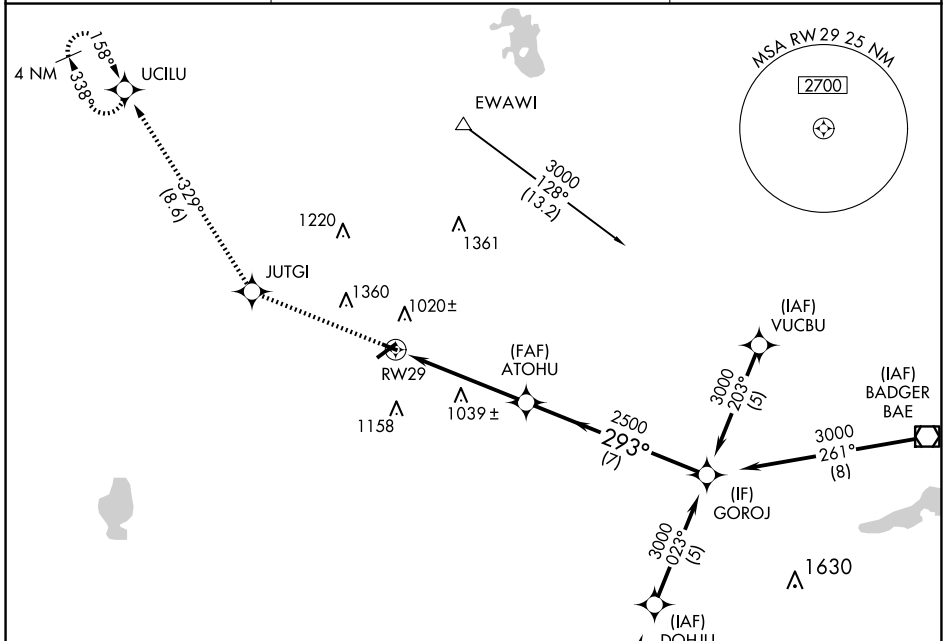
# RNAV (GPS) RWY 29

WATERTOWN MUNI (RYV)

**⚠** Circling to Rwy 23 NA at night. Rwy 29 helicopter visibility reduction below 1 SM NA. DME/DME RNP-0.3 NA. When local altimeter setting not received, use Dodge County altimeter setting and increase all MDAs 60 feet and LNAV visibility Cat C/D 1/8 SM.

**MISSED APPROACH:** Climb to 3000 direct JUTGI and right turn via 329° track to UCILU and hold.

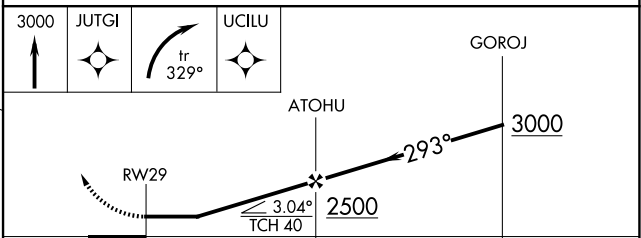
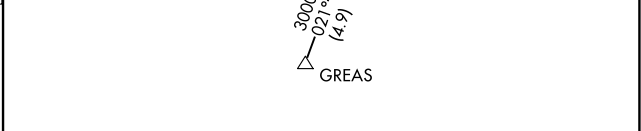
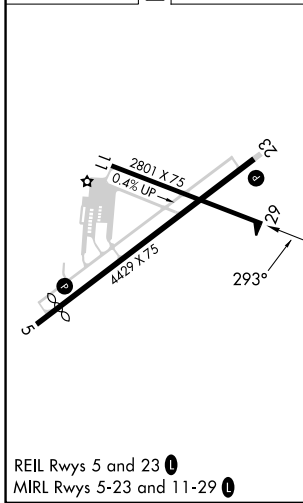
AWOS-3 <b>119.975</b>	MADISON APP CON * <b>119.15 343.7</b>	UNICOM <b>122.8 (CTAF)</b>
--------------------------	--	-------------------------------



EC-3, 16 APR 2026 to 14 MAY 2026

EC-3, 16 APR 2026 to 14 MAY 2026

ELEV 833	<b>D</b>	TDZE 833
----------	----------	----------



CATEGORY	A	B	C	D
LNAV MDA	1400-1 567 (600-1)		1400-1½ 567 (600-1½)	1400-1¾ 567 (600-1¾)
CIRCLING	1400-1 567 (600-1)	1440-1 607 (700-1)	1720-2¾ 887 (900-2¾)	1720-3 887 (900-3)