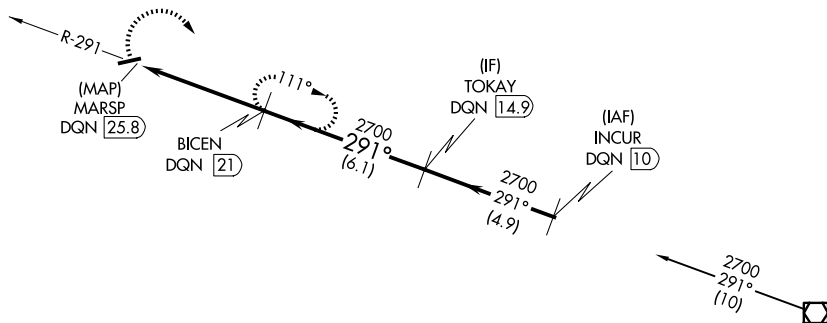
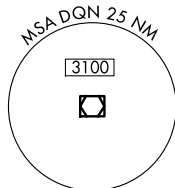


VOR/DME DQN 114.5 Chan 92	APP CRS 291°	Rwy Ldg TDZE Apt Elev	N/A N/A 1123
---	------------------------	-----------------------------	---

VOR-A
RANDOLPH COUNTY (I22)

DME required.	MISSED APPROACH: Climbing right turn to 2700 on DQN VOR/DME R-291 to BICEN/21 DME and hold.
▼ ▲ NA	

VES AWOS-3PT 125.9	COLUMBUS APP CON 134.45 352.05	UNICOM 123.0 (CTAF) 1
------------------------------	--	--

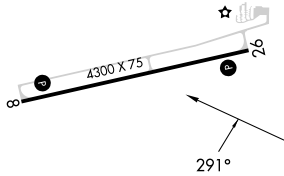


EC-2, 16 APR 2026 to 14 MAY 2026

EC-2, 16 APR 2026 to 14 MAY 2026

ELEV 1123

Procedure NA for arrival on DQN VOR/DME airway radials 234 CW 329.



REIL Rwys 8 and 26 **1**
MIRL Rwy 8-26 **1**

	2700 DQN R-291	BICEN DQN 21	BICEN DQN 21	TOKAY DQN 14.9
	MARSP DQN 25.8	2700	2700	2700
		4.8 NM	6.1 NM	
CATEGORY	A	B	C	D
CIRCLING	1700-1	577 (600-1)	1820-2 697 (700-2)	NA