

KUSSO TWO DEPARTURE (RNAV)
(KUSSO2.KUSSO) 221AN26

LONE STAR DEP CON
118.1 306.95
CTAF
122.8

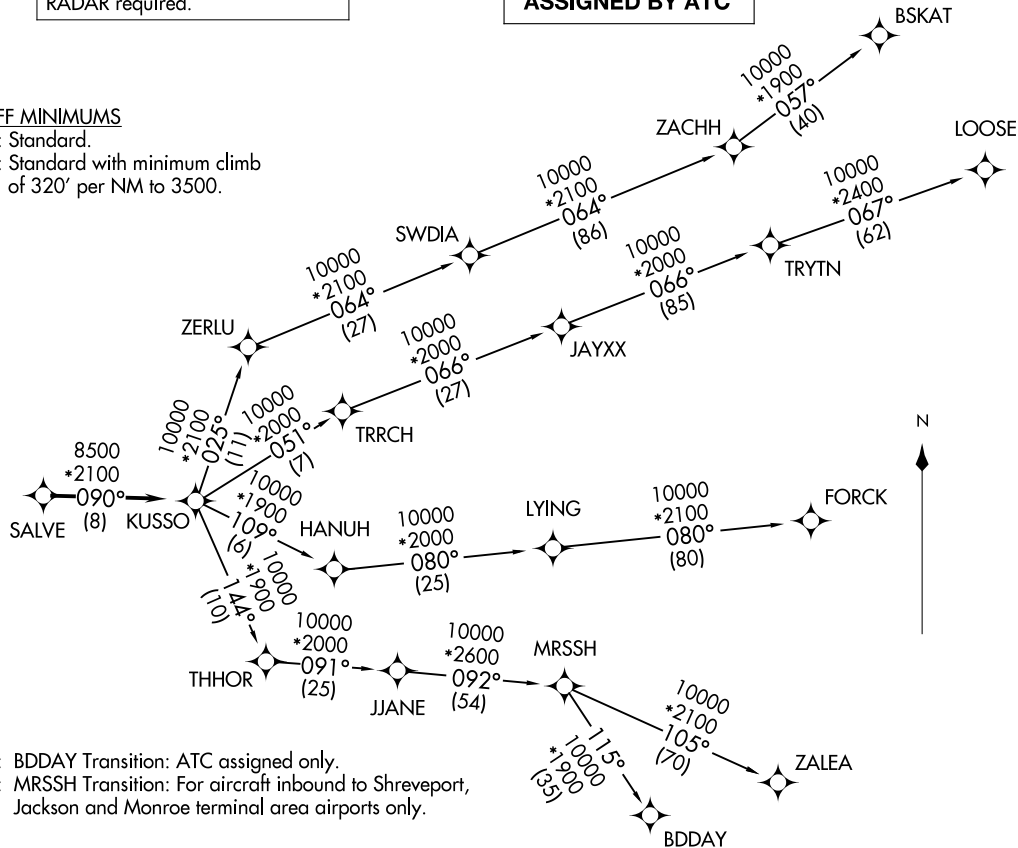
RNAV 1 - DME/DME/IRU or GPS.

RADAR required.

**TOP ALTITUDE:
ASSIGNED BY ATC**

TAKEOFF MINIMUMS

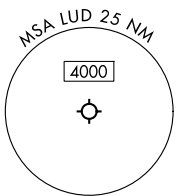
Rwy 17: Standard.
Rwy 35: Standard with minimum climb
of 320' per NM to 3500.



NOTE: BDDAY Transition: ATC assigned only.
NOTE: MRSSH Transition: For aircraft inbound to Shreveport,
Jackson and Monroe terminal area airports only.

(CONTINUED ON FOLLOWING PAGE)

NOTE: Chart not to scale.



DECATUR, TEXAS
(LTD)
DECATUR MUNI (LTD)

(KUSSO2.KUSSO) 26022
KUSSO TWO DEPARTURE (RNAV)

AL-6190 (FAA)

DECATUR MUNI (LTD)
DECATUR, TEXAS

KUSSO TWO DEPARTURE (RNAV)



DEPARTURE ROUTE DESCRIPTION

TAKEOFF RUNWAY 17: Climb on heading 169° to 1700 before proceeding north.

When entering controlled airspace, fly heading assigned by ATC, expect vector to SALVE, then on track 090° to KUSSO, then on assigned transition. Maintain ATC assigned altitude, expect filed altitude 10 minutes after departure.

BDDAY TRANSITION (KUSSO2.BDDAY)

BSKAT TRANSITION (KUSSO2.BSKAT)

FORCK TRANSITION (KUSSO2.FORCK)

LOOSE TRANSITION (KUSSO2.LOOSE)

MRSSH TRANSITION (KUSSO2.MRSSH)

ZALEA TRANSITION (KUSSO2.ZALEA)

SC-2, 16 APR 2026 to 14 MAY 2026

SC-2, 16 APR 2026 to 14 MAY 2026