

WAAS CH <b>40107</b> <b>W17A</b>	APP CRS <b>169°</b>	Rwy Idg <b>4200</b> TDZE <b>1047</b> Apt Elev <b>1047</b>
----------------------------------------	------------------------	-----------------------------------------------------------------

# RNAV (GPS) RWY 17

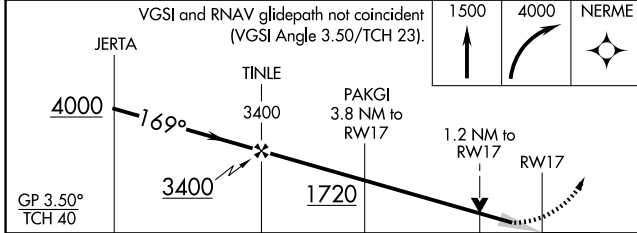
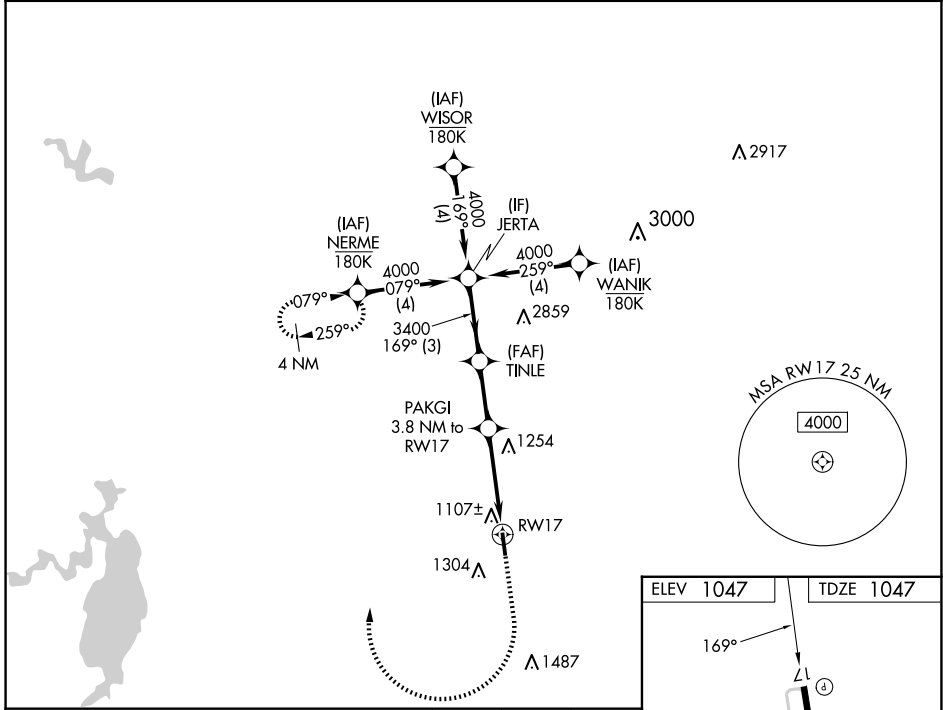
DECATUR MUNI (LUD)

RNP APCH - GPS.

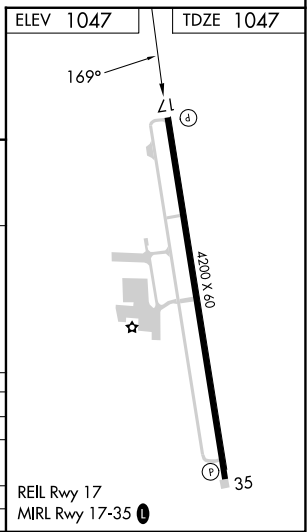
**⚠** For uncompensated Baro-VNAV systems, LNAV/VNAV NA below -17°C or above 54°C. Baro-VNAV and VDP NA when using FTW altimeter setting. When local altimeter setting not received, use FTW altimeter setting and increase LPV DA to 1408 feet; increase LNAV/VNAV DA to 1466 feet and all visibilities ½ SM; increase all MDAs 120 feet.

MISSED APPROACH: Climb to 1500 then climbing right turn to 4000 direct NERME and hold, continue climb-in-hold.

AWOS-3 <b>118.225</b>	LONE STAR APP CON <b>118.1 306.95</b>	UNICOM <b>122.8(CTAF) 0</b>
--------------------------	------------------------------------------	--------------------------------



CATEGORY	A	B	C	D
LPV DA	1297-1	250 (300-1)		NA
LNAV/VNAV DA	1355-1	308 (400-1)		NA
LNAV MDA	1500-1	453 (500-1)		NA
<b>C</b> CIRCLING	1600-1	553 (600-1)		NA



SC-2, 16 APR 2026 to 14 MAY 2026

SC-2, 16 APR 2026 to 14 MAY 2026