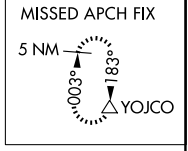
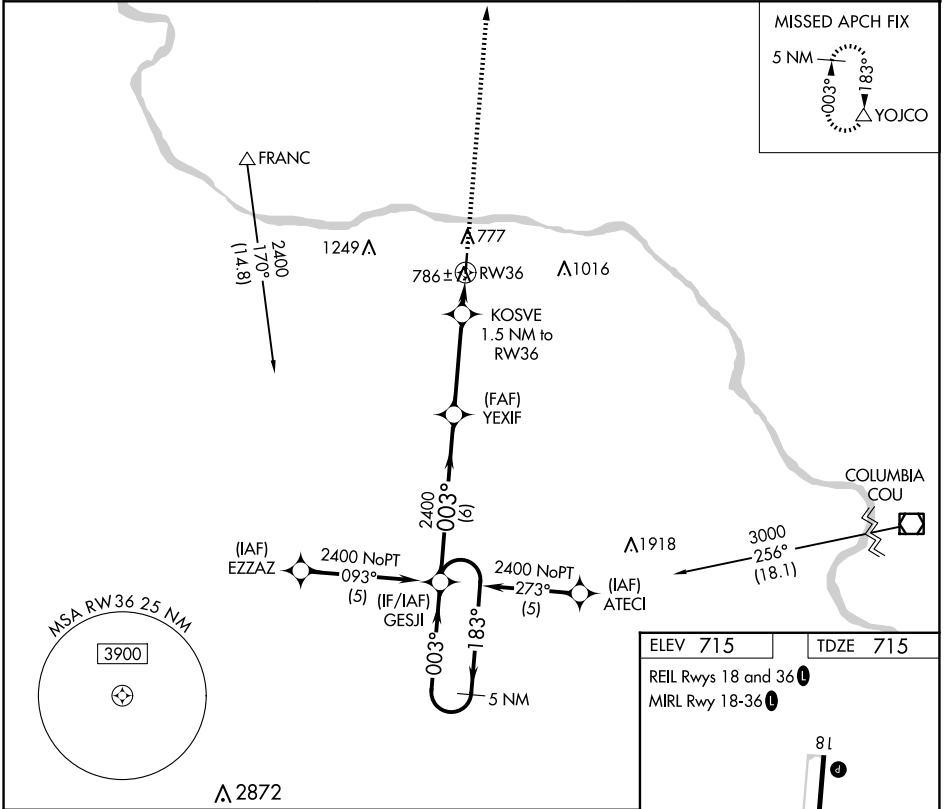


APP CRS	Rwy Idg	<b>4000</b>
<b>003°</b>	TDZE	<b>715</b>
	Apt Elev	<b>715</b>

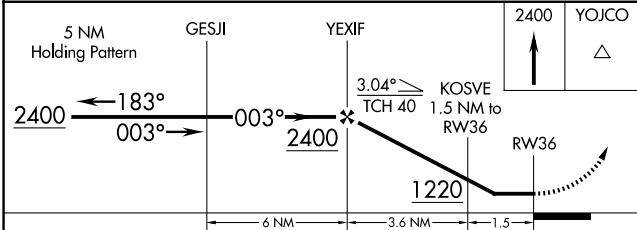
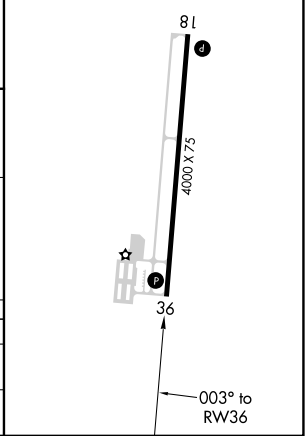
# RNAV (GPS) RWY 36

JESSE VIERTEL MEML (V.E.R.)

RNP APCH.		MISSED APPROACH: Climb to 2400 direct YOJCO and hold.
<p>▼ Straight-in Rwy 36 NA at night. Circling Rwy 36 NA at night.                  ▲ Rwy 36 helicopter visibility reduction below 1 SM NA.                  Use Columbia Rgnl altimeter setting.</p>		
AWOS-3PT <b>119.625</b>	MIZZU APP CON <b>124.375</b>	UNICOM <b>122.7 (CTAF) ①</b>



ELEV 715	TDZE 715
REIL Rwy 18 and 36 ①	
MIRL Rwy 18-36 ①	



CATEGORY	A	B	C	D
RNAV MDA	1120-1	405 (500-1)	1120-1¼ 405 (500-1¼)	NA
CIRCLING	1260-1 545 (600-1)	1340-1 625 (700-1)	1420-2 705 (800-2)	NA

NC-3, 16 APR 2026 to 14 MAY 2026

NC-3, 16 APR 2026 to 14 MAY 2026