

APP CRS	Rwy Idg	4000
174°	TDZE	247
	Apt Elev	248

RNAV (GPS) RWY 17

PANOLA COUNTY-SHARPE FLD (4F2)

RNP APCH-GPS.

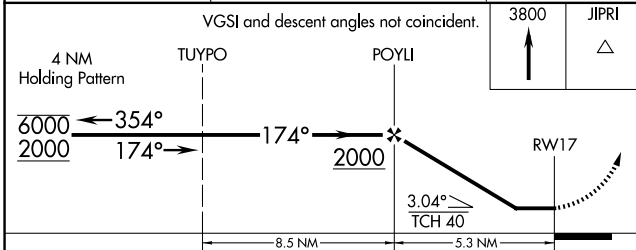
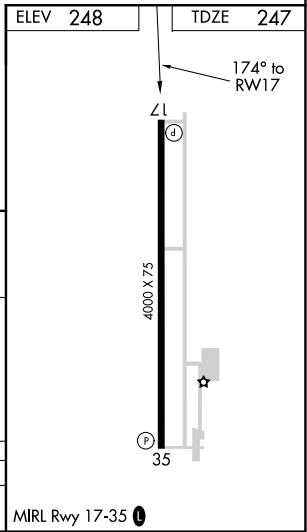
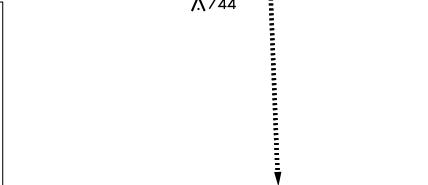
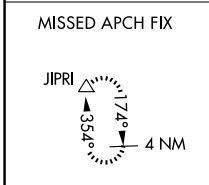
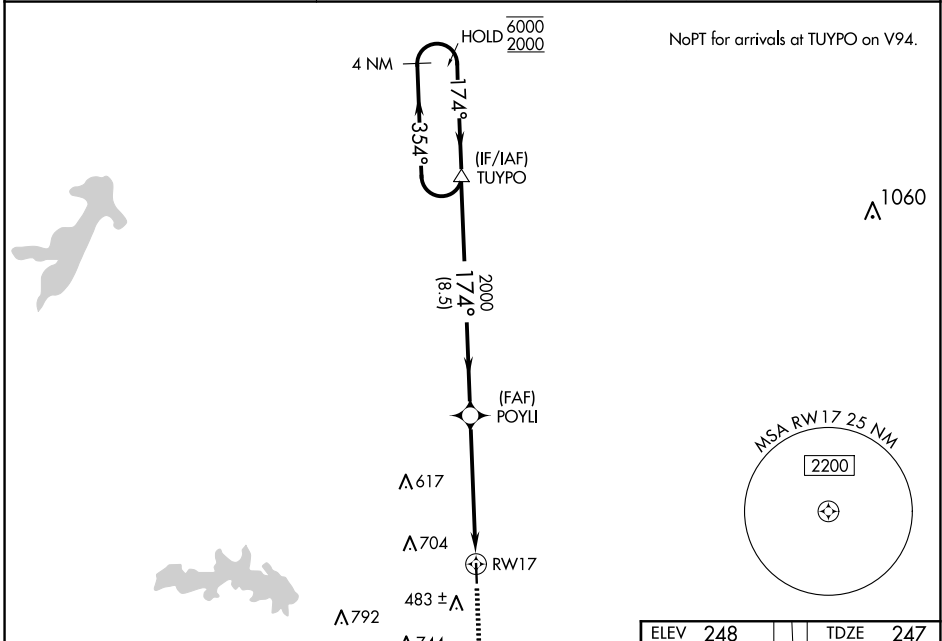
▲ Procedure NA at night. Rwy 17 helicopter visibility reduction below 1 SM NA. When local altimeter setting not received, use Longview altimeter setting.

MISSED APPROACH: Climb to 3800 direct JIPRI and hold, continue climb-in-hold to 3800.

AWOS-3PT
121.125

SHREVEPORT APP CON ★
119.9 335.55

UNICOM
122.8 (CTAF) 0



CATEGORY	A	B	C	D
LNAV MDA	760-1	513 (600-1)	760-1 3/8 513 (600-1 3/8)	NA

SC-2, 16 APR 2026 to 14 MAY 2026

SC-2, 16 APR 2026 to 14 MAY 2026