

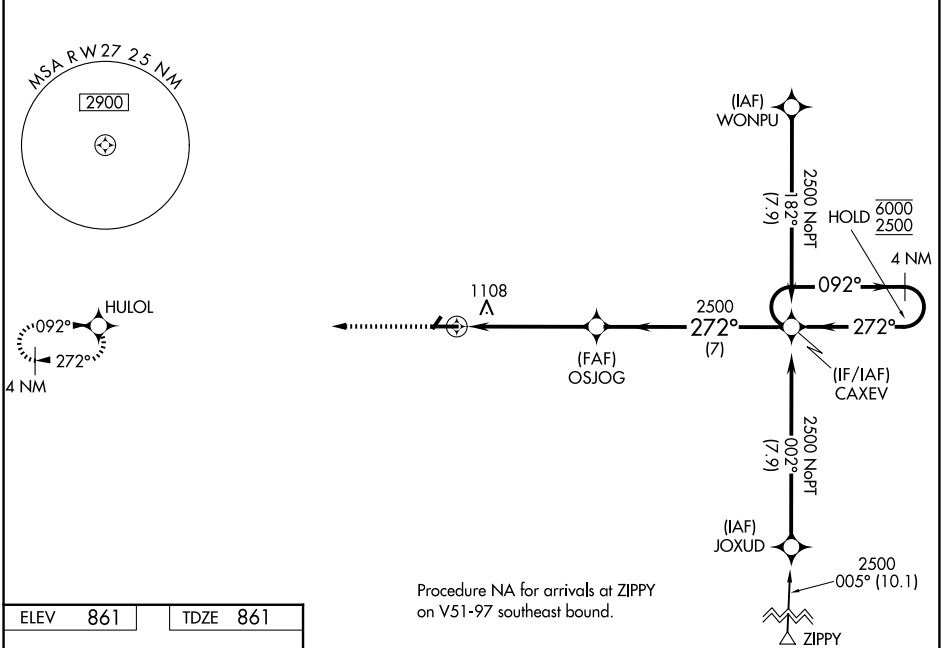
WAAS CH 65734 W27A	APP CRS 272°	Rwy Ldg TDZE Apt Elev	5000 861 861
----------------------------------------	------------------------	-----------------------------	-----------------------------------------

RNAV (GPS) RWY 27

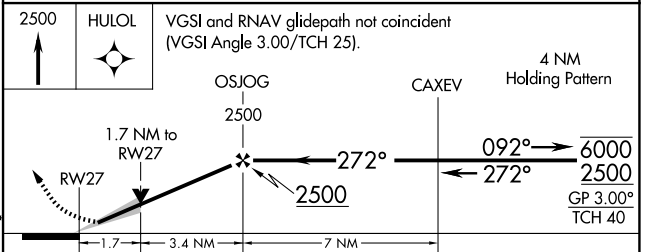
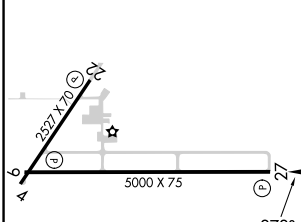
FRANKFORT CLINTON COUNTY RGNL (F'KR)

RNP APCH - GPS.	MISSED APPROACH: Climb to 2500 direct HULOL and hold.
<p>▽ Circling Rwy 4, 22 NA at night. For uncompensated Baro-VNAV systems, ▲ LNAV/VNAV NA below -16°C or above 54°C.</p>	

AWOS-3 124.325	GRISSOM APP CON ★ 123.85 291.675	UNICOM 123.0 (CTAF) 0
--------------------------	--------------------------------------------	---------------------------------



ELEV 861	TDZE 861
-----------------	-----------------



CATEGORY	A	B	C	D
LPV DA	1111-3/4		250 (300-3/4)	
LNAV/VNAV DA	1476-13/4		615 (700-13/4)	
LNAV MDA	1420-1	559 (600-1)	1420-1 1/2	559 (600-1 1/2)
CIRCLING	1460-1	599 (600-1)	1520-1 3/4 659 (700-1 3/4)	1520-2 659 (700-2)

MIRL Rwy 9-27 and 4-22 0
REIL Rwy 9 and 27 0

EC-2, 16 APR 2026 to 14 MAY 2026

EC-2, 16 APR 2026 to 14 MAY 2026