

WAAS CH 93917 W14A	APP CRS 133°	Rwy Ldg TDZE Apt Elev	4600 984 987
--	------------------------	-----------------------------	---

RNAV (GPS) RWY 14

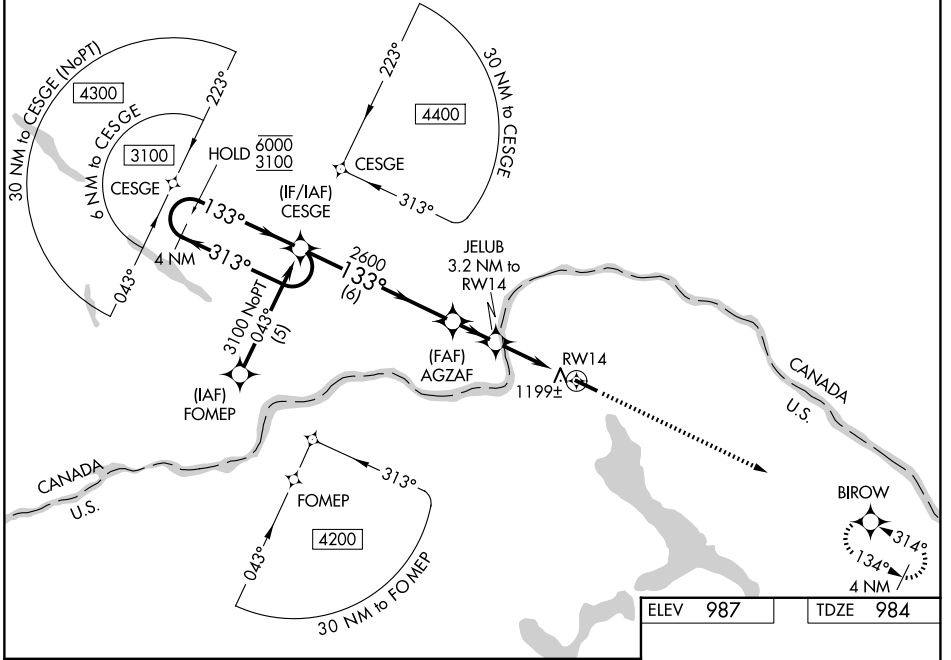
NORTHERN AROOSTOOK RGNL (FVE)

RNP APCH - GPS.

⚠ For uncompensated Baro-VNAV systems, LNAV/VNAV NA below -16°C or above 54°C. Rwy 14 helicopter visibility reduction below 3/4 SM NA. Baro-VNAV and VDP NA when using CAR altimeter setting. When local altimeter setting not received, use CAR altimeter setting and increase LPV DA to 1386 feet, LNAV/VNAV DA to 1635 feet and all MDAs 120 feet. Increase LPV all Cats visibility 1/8 SM, LNAV Cat C visibility 3/8 SM, Cat D and Circling Cat D visibility 1/4 SM and Circling Cat C visibility 1/2 SM.

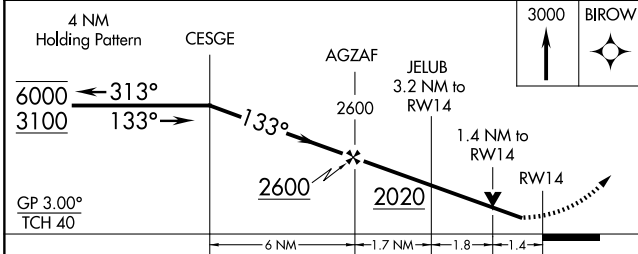
MISSED APPROACH:
Climb to 3000 direct BIROW and hold.

ASOS 135.725	BOSTON CENTER 124.75 239.05	UNICOM 122.7 (CTAF)
------------------------	---------------------------------------	-------------------------------



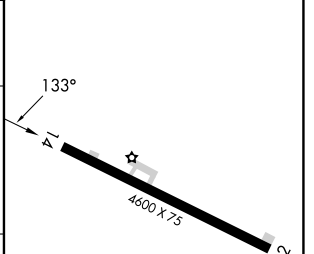
NE-1, 16 APR 2026 to 14 MAY 2026

NE-1, 16 APR 2026 to 14 MAY 2026



ELEV 987	TDZE 984
----------	----------

CATEGORY	A	B	C	D
LPV DA		1270-1	286 (300-1)	
LNAV/VNAV DA		1519-2	535 (600-2)	
LNAV MDA	1460-1	476 (500-1)	1460-1 1/2 476 (500-1 1/2)	1460-1 1/2 476 (500-1 1/2)
CIRCLING	1560-1 573 (600-1)	1580-1 593 (600-1)	1840-2 1/2 853 (900-2 1/2)	1840-2 3/4 853 (900-2 3/4)



MIRL Rwy 14-32	REL Rwys 14 and 32
----------------	--------------------