

|  |                        |   |
|--|------------------------|---|
| WAAS<br>CH <b>58133</b><br><b>W17A</b> | APP CRS<br><b>177°</b> | Rwy Ldg <b>4020</b><br>TDZE <b>1176</b><br>Apt Elev <b>1176</b> |
|--|------------------------|---|

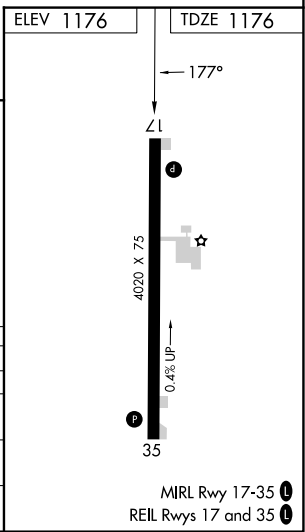
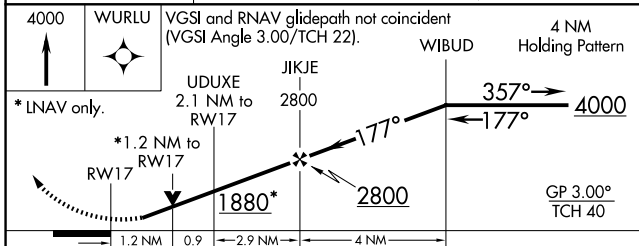
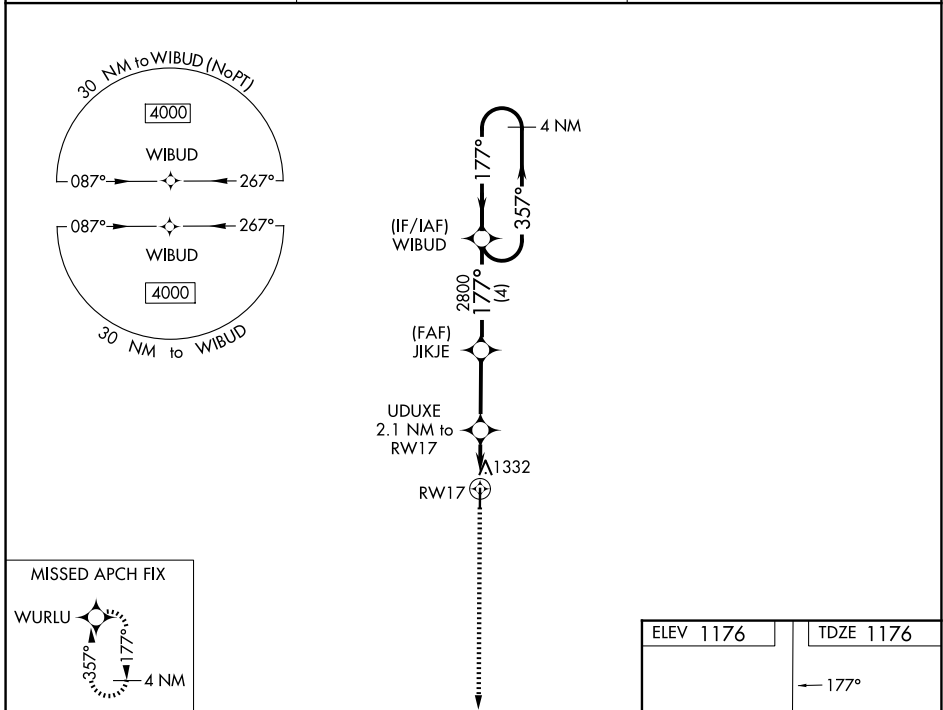
# RNAV (GPS) RWY 17

HAMPTON MUNI (HPT)

**▽** VDP and Baro-VNAV NA when using Mason City altimeter setting. For uncompensated Baro-VNAV systems, LNAV/VNAV NA below -17°C (2°F) or above 54°C (130°F).  
**▲ NA** DME/DME RNP-0.3 NA. Helicopter visibility reduction below ¼ SM NA. When local altimeter setting not received, use Mason City altimeter setting and increase all DA 67 feet and all MDA 80 feet, and LNAV/VNAV all Cats visibility ¼ mile.

**MISSED APPROACH:** Climb to 4000 direct WURLU and hold, continue climb-in-hold to 4000.

|                          |  |                                 |
|--------------------------|--|---------------------------------|
| AWOS-3<br><b>121.025</b> | MINNEAPOLIS CENTER<br><b>134.0 288.3</b> | UNICOM<br><b>122.7 (CTAF) 0</b> |
|--------------------------|--|---------------------------------|



| CATEGORY     | A       | B            | C | D  |
|--------------|---------|--------------|---|----|
| LPV DA       | 1426-1  | 250 (300-1)  |   | NA |
| LNAV/VNAV DA | 1605-1½ | 429 (500-1½) |   | NA |
| LNAV MDA     | 1600-1  | 424 (500-1)  |   | NA |
| CIRCLING     | 1640-1  | 464 (500-1)  |   | NA |