

WAAS CH <b>77833</b> <b>W35A</b>	APP CRS <b>357°</b>	Rwy Ldg <b>4020</b> TDZE <b>1168</b> Apt Elev <b>1176</b>
--	------------------------	---

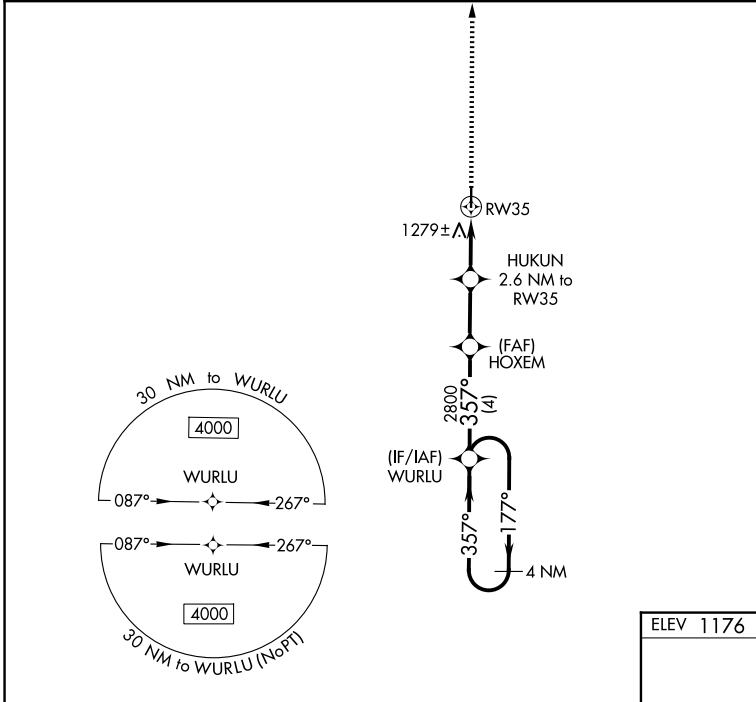
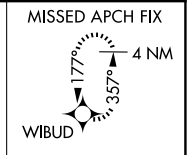
# RNAV (GPS) RWY 35

HAMPTON MUNI (HPT)

**▽** VDP and Baro-VNAV NA when using Mason City altimeter setting. For uncompensated Baro-VNAV systems, LNAV/VNAV NA below -17°C (2°F) or above 54°C (130°F).  
**△** NA DME/DME RNP-0.3 NA. Helicopter visibility reduction below ¼ SM NA. When local altimeter setting not received, use Mason City altimeter setting and increase all DA 67 feet and all MDA 80 feet, and LNAV/VNAV all Cats visibility ¼ mile.

**MISSED APPROACH:** Climb to 4000 direct WIBUD and hold, continue climb-in-hold to 4000.

AWOS-3 <b>121.025</b>	MINNEAPOLIS CENTER <b>134.0 288.3</b>	UNICOM <b>122.7 (CTAF)</b>
--------------------------	--	-------------------------------

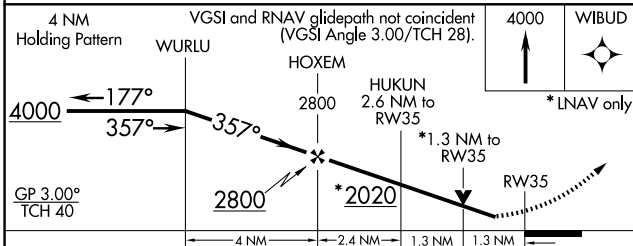


NC-3, 16 APR 2026 to 14 MAY 2026

NC-3, 16 APR 2026 to 14 MAY 2026

ELEV 1176	TDZE 1168
-----------	-----------

MIRL Rwy 17-35 **Ⓛ**  
 REIL Rws 17 and 35 **Ⓛ**



CATEGORY	A	B	C	D
LPV DA	1418-1	250 (300-1)		NA
LNAV/VNAV DA	1654-1½	486 (500-1½)		NA
LNAV MDA	1620-1	452 (500-1)		NA
CIRCLING	1640-1	464 (500-1)		NA