

WAAS CH 86231 W16A	APP CRS 156°	Rwy Ldg TDZE Apt Elev	4435 1459 1478
--	------------------------	-----------------------------	---

RNAV (GPS) RWY 16

TAYLOR COUNTY (MDZ)

RNP APCH.

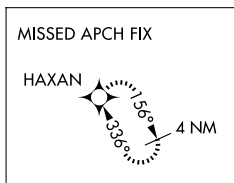
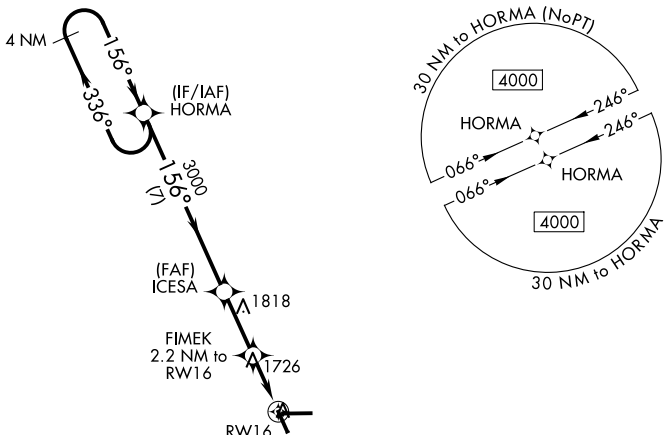
⚠ When local altimeter setting not received, use Merrill altimeter setting and increase all MDA 100 feet and increase all Cat C/D visibility $\frac{1}{4}$ mile. Rwy 16 helicopter visibility reduction below $\frac{3}{4}$ SM NA. VDP NA when using Merrill altimeter setting.

MISSED APPROACH:
Climb to 4000 direct HAXAN and hold.

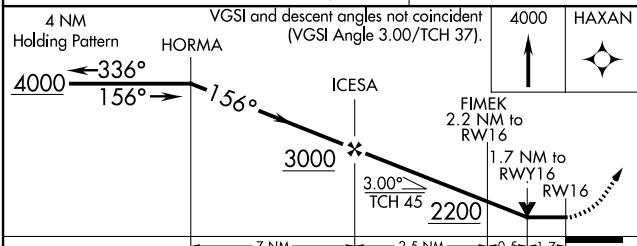
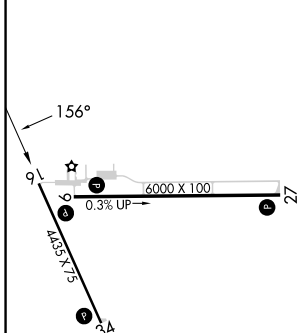
AWOS-3
119.025

MINNEAPOLIS CENTER
124.4 317.7

UNICOM
122.8 (CTAF)



ELEV 1478	TDZE 1459
-----------	-----------



CATEGORY	A	B	C	D
LP MDA	2040-1	581 (600-1)	2040-1 $\frac{3}{4}$	581 (600-1 $\frac{3}{4}$)
LNAV MDA	2060-1	601 (600-1)	2060-1 $\frac{3}{4}$	601 (600-1 $\frac{3}{4}$)
CIRCLING	2060-1	582 (600-1)	2060-1 $\frac{3}{4}$ 582 (600-1 $\frac{3}{4}$)	2180-2 $\frac{1}{4}$ 702 (800-2 $\frac{1}{4}$)

REIL Rwys 9, 27 and 34
MIRL Rwys 9-27 and 16-34

EC-3, 16 APR 2026 to 14 MAY 2026

EC-3, 16 APR 2026 to 14 MAY 2026