

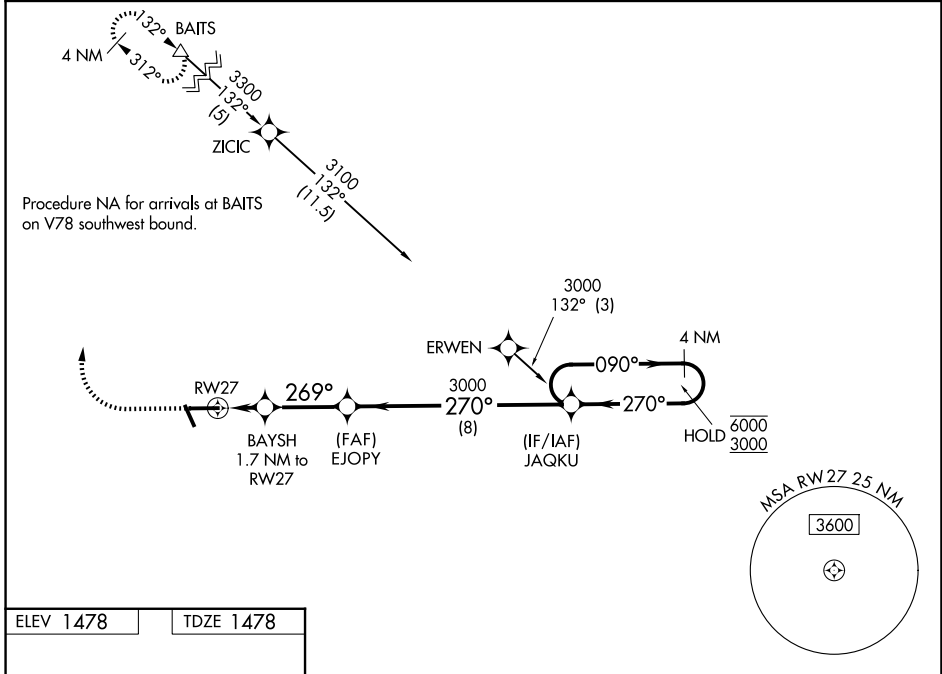
WAAS CH <b>66011</b> <b>W27A</b>	APP CRS <b>269°</b>	Rwy Ldg TDZE <b>1478</b> Apt Elev <b>1478</b>
--	------------------------	---

# RNAV (GPS) RWY 27

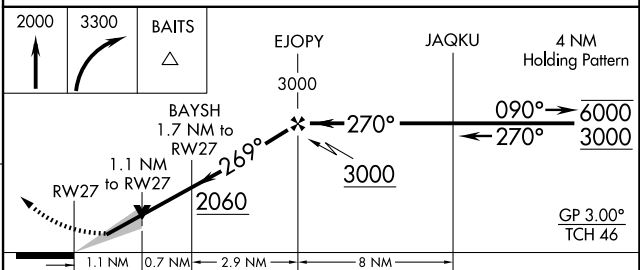
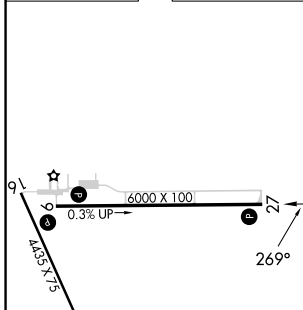
TAYLOR COUNTY (MDZ)

RNP APCH-GPS.	MISSED APPROACH: Climb to 2000 then climbing right turn to 3300 direct BAITS and hold.
⚠ For uncompensated Baro-VNAV systems, LNAV/VNAV NA below -17°C or above 54°C.	

AWOS-3 <b>119.025</b>	MINNEAPOLIS CENTER <b>124.4 317.7</b>	UNICOM <b>122.8 (CTAF) 0</b>
--------------------------	--	---------------------------------



ELEV 1478	TDZE 1478
-----------	-----------



	A	B	C	D
LPV DA		1678-3/4	200 (200-3/4)	
LNAV/VNAV DA		1877-1 1/8	399 (400-1 1/8)	
LNAV MDA	1860-1	382 (400-1)	1860-1 1/8	382 (400-1 1/8)
CIRCLING	1900-1 422 (500-1)	2040-1 562 (600-1)	2040-1 1/2 562 (600-1 1/2)	2180-2 1/4 702 (800-2 1/4)

EC-3, 16 APR 2026 to 14 MAY 2026

EC-3, 16 APR 2026 to 14 MAY 2026