

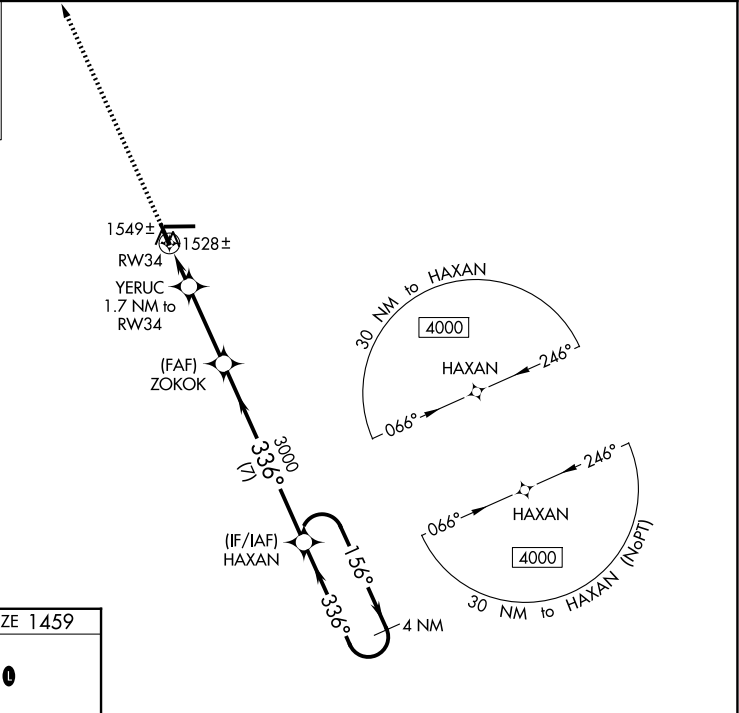
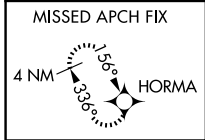
WAAS CH <b>73029</b> <b>W34A</b>	APP CRS <b>336°</b>	Rwy Ldg TDZE Apt Elev	<b>4435</b> <b>1459</b> <b>1478</b>
--	------------------------	-----------------------------	---

# RNAV (GPS) RWY 34

TAYLOR COUNTY (MDZ)

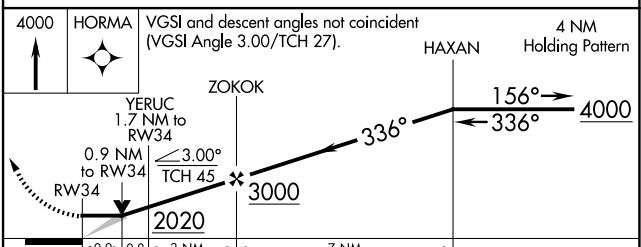
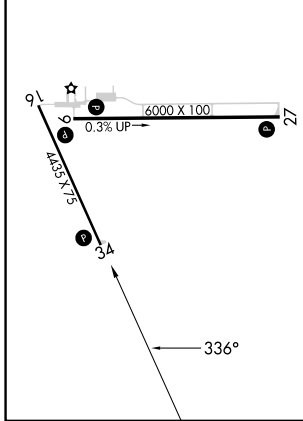
RNP APCH.	MISSED APPROACH: Climb to 4000 direct HORMA and hold.
<p>▼ When local altimeter setting not received, use Merrill altimeter setting: increase all MDA 100 feet and all Cat C and D visibilities ¼ SM. VDP NA when using Merrill altimeter setting.</p>	

AWOS-3 <b>119.025</b>	MINNEAPOLIS CENTER <b>124.4 317.7</b>	UNICOM <b>122.8 (CTAF) ①</b>
--------------------------	--	---------------------------------



ELEV 1478	TDZE 1459
-----------	-----------

REIL Rwy 9, 27 and 34 ①  
MIRL Rwy 9-27 and 16-34 ①



CATEGORY	A	B	C	D
LP MDA	1780-1 321 (400-1)			
LNAV MDA	1800-1 341 (400-1)			
CIRCLING	1940-1 462 (500-1)	2040-1 562 (600-1)	2040-1½ 562 (600-1½)	2180-2¼ 702 (800-2¼)

EC-3, 16 APR 2026 to 14 MAY 2026

EC-3, 16 APR 2026 to 14 MAY 2026