

(AZALA4.AZALA) 24305

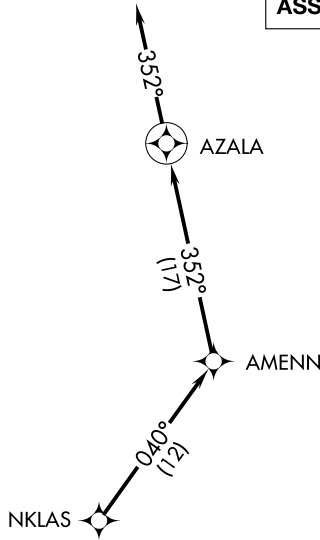
AL-6201 (FAA)

THOMSON/McDUFFIE COUNTY (HQU)  
THOMSON, GEORGIA

# AZALA FOUR DEPARTURE (RNAV)

AUGUSTA DEP CON ★  
124.45 270.3  
CTAF  
122.8

**TOP ALTITUDE:  
ASSIGNED BY ATC**



**TAKEOFF MINIMUMS:**

- Rwy 10: Standard.
- Rwy 28: 200-1¼ or standard with minimum climb of 235' per NM to 700, or alternatively, with standard takeoff minimums and a normal 200' per NM climb gradient, takeoff must occur no later than 1900' prior to DER.

- NOTE: RADAR and GPS required.
- NOTE: RNAV 1.
- NOTE: Do not exceed 250K until advised by ATC.
- NOTE: For prop aircraft during Masters golf tournament week only.

NOTE: Chart not to scale.



## DEPARTURE ROUTE DESCRIPTION

TAKEOFF RWY 10, 28: Climb on assigned heading for RADAR vectors to NKLAS. Then on depicted route to AZALA, then fly heading 352°, for RADAR vectors, thence. . . .

. . . .maintain altitude assigned by ATC. Expect clearance to filed altitude/flight level within 10 minutes after departure.

**AZALA FOUR DEPARTURE (RNAV)**  
(AZALA4.AZALA) 19JUL18

THOMSON, GEORGIA  
THOMSON/McDUFFIE COUNTY (HQU)

SE-4, 16 APR 2026 to 14 MAY 2026

SE-4, 16 APR 2026 to 14 MAY 2026