

WAAS CH <b>58121</b> <b>W28A</b>	APP CRS <b>277°</b>	Rwy ldg TDZE <b>497</b> Apt Elev <b>501</b>	<b>5179</b>
--	------------------------	--	-------------

# RNAV (GPS) RWY 28

THOMSON/McDUFFIE COUNTY (HQJ)

RNP APCH

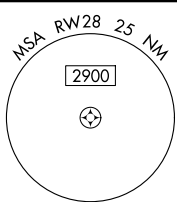
▼ Baro-VNAV NA when using Daniel Field altimeter setting. For uncompensated Baro-VNAV systems, LNAV/VNAV NA below -15°C (5°F) or above 54°C (130°F).  
 ▲ When local altimeter setting not received, use Daniel Field altimeter setting: increase LPV DA to 854 feet and visibility Cats A/B ½ SM, increase LNAV/VNAV DA to 877 feet; increase all MDAs 80 feet and increase visibility LNAV Cats C/D and Circling Cat C ¼ SM, and Circling Cat D ½ SM. Rwy 28 helicopter visibility reduction below ¾ SM NA.

MISSED APPROACH: Climb to 2500 direct BHEAD and hold.

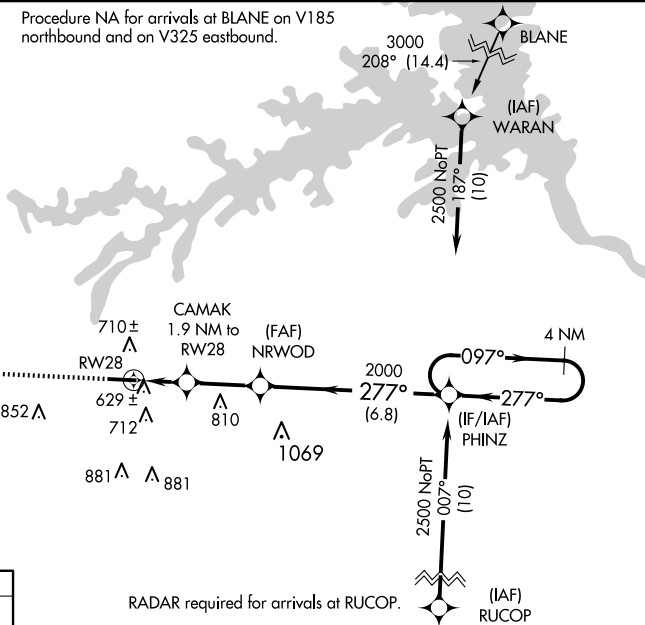
AWOS-3  
**120.625**

AUGUSTA APP CON \*  
**124.45 270.3**

UNICOM  
**122.8 (CTAF) 0**



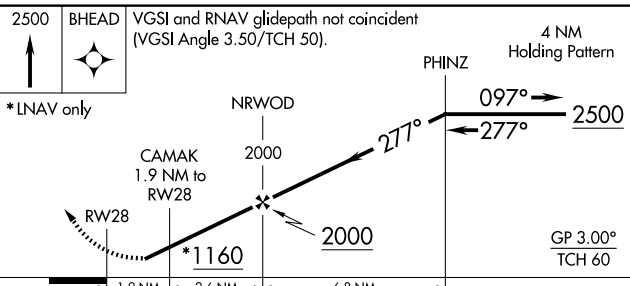
Procedure NA for arrivals at BLANE on V185 northbound and on V325 eastbound.



SE-4, 16 APR 2026 to 14 MAY 2026

SE-4, 16 APR 2026 to 14 MAY 2026

ELEV 501	<b>D</b>	TDZE 497
----------	----------	----------



	1.9 NM	2.6 NM	6.8 NM	
CATEGORY	A	B	C	D
LPV DA	787-7/8	290 (300-7/8)	787-1	290 (300-1)
LNAV/VNAV DA	810-1 313 (400-1)			
LNAV MDA	880-1	383 (400-1)	880-1 1/8	383 (400-1 1/8)
CIRCLING	1060-1	1080-1	1200-2	1240-2 1/4
	559 (600-1)	579 (600-1)	699 (700-2)	739 (800-2 1/4)