

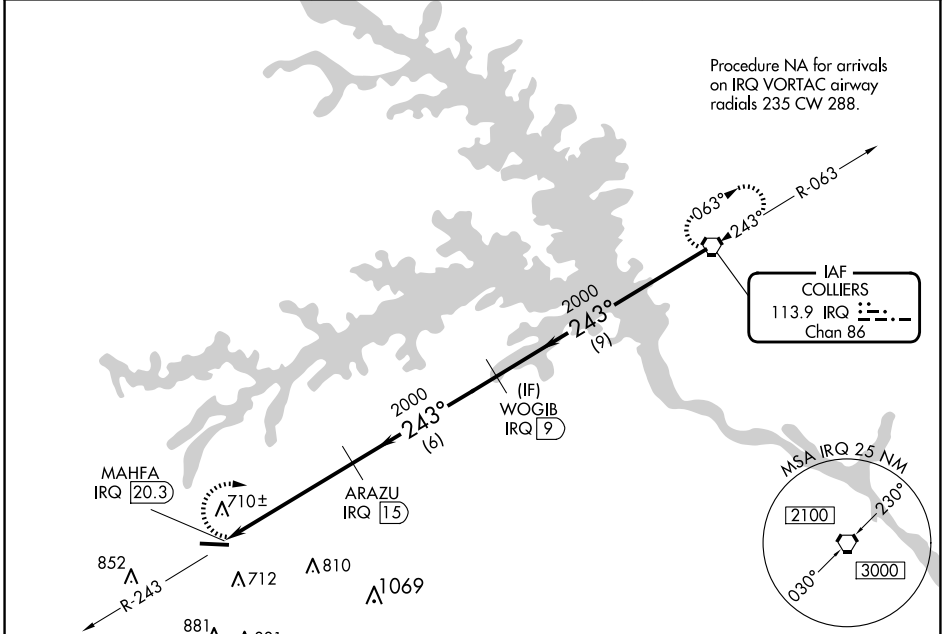
VORTAC IRQ 113.9 Chan 86	APP CRS 243°	Rwy Idg TDZE Apt Elev	N/A N/A 501
--	------------------------	-----------------------------	--

VOR/DME-A
THOMSON/McDUFFIE COUNTY (HQU)

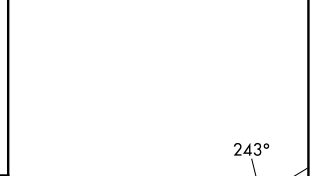
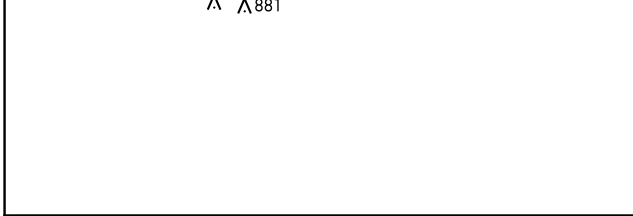
▼ Visibility reduction by helicopters NA. When local altimeter setting not received, use Daniel Field altimeter setting and increase all MDAs 80 feet and visibility Cat C ¼ SM and Cat D ½ SM.

▲ MISSED APPROACH: Climbing right turn to 2400 direct IRQ VORTAC and hold.

AWOS-3 120.625	AUGUSTA APP CON * 124.45 270.3	UNICOM 122.8 (CTAF) ①
--------------------------	--	--

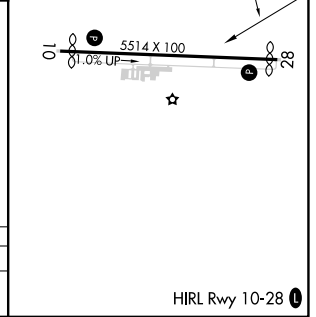


ELEV 501 **D**



2400	IRQ			
		ARAZU IRQ [15]	WOGIB IRQ [9]	IRQ VORTAC
		2000	2000	2000
		5.3 NM	6 NM	9 NM

CATEGORY	A	B	C	D
CIRCLING	1060-1 559 (600-1)	1080-1¼ 579 (600-1¼)	1160-1¾ 659 (700-1¾)	1240-2¼ 739 (800-2¼)



HIRL Rwy 10-28 **①**

SE-4, 16 APR 2026 to 14 MAY 2026

SE-4, 16 APR 2026 to 14 MAY 2026