

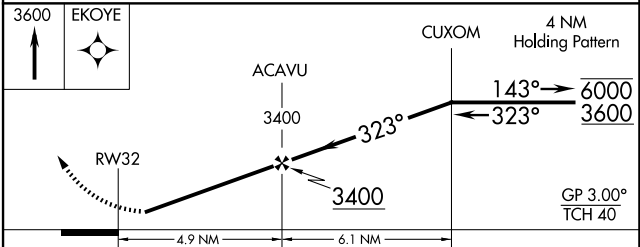
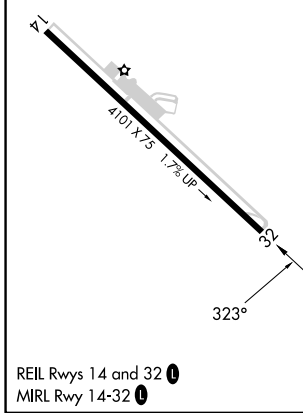
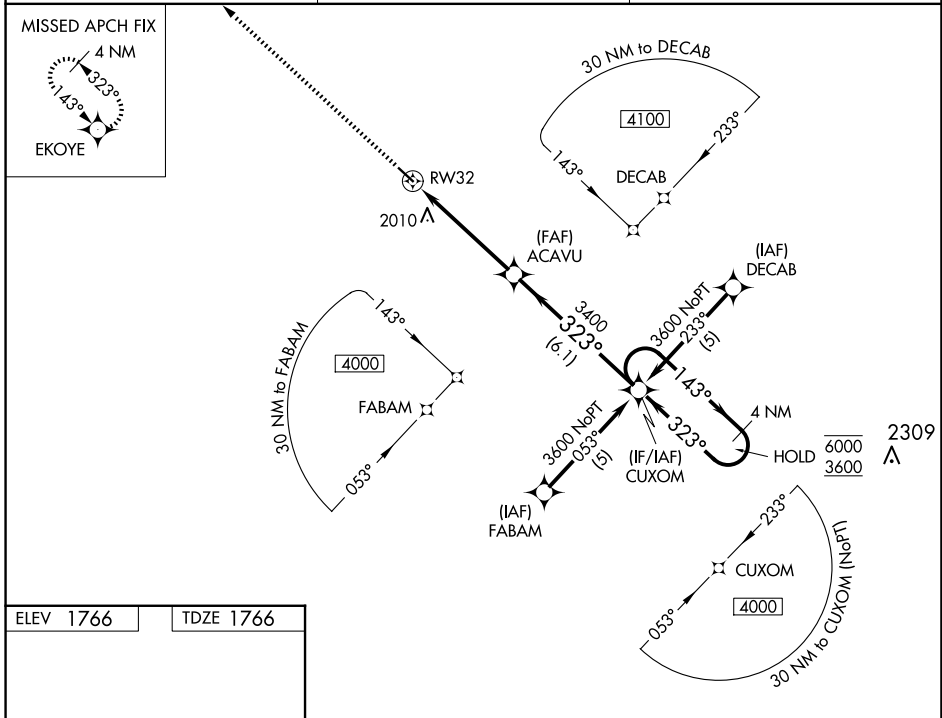
WAAS CH 70719 W32A	APP CRS 323°	Rwy Ldg 4101 TDZE 1766 Apt Elev 1766
--	------------------------	---

RNAV (GPS) RWY 32

CORRY-LAWRENCE (8G2)

RNP APCH - GPS.		MISSED APPROACH: Climb to 3600 direct EKOYE and hold.
<p>∇ Rwy 32 helicopter visibility reduction below 1 SM NA. Baro-VNAV NA. Use JHW altimeter setting; when not received, use GKI altimeter setting and increase LPV DA to 2140 feet; increase LNAV/VNAV DA to 2386 feet and all visibilities ½ SM. Increase all MDAs 80 feet and LNAV visibility Cat C ½ SM. Procedure NA at night.</p>		

JHW AWOS-3PT 118.425	BUFFALO APP CON * 121.0 257.8	UNICOM 122.8 (CTAF) 0
--------------------------------	---	---------------------------------



CATEGORY	A	B	C	D
LPV DA	2078-1 312 (400-1)			NA
LNAV/VNAV DA	2324-1½ 558 (600-1½)			NA
LNAV MDA	2340-1 574 (600-1)		2340-1½ 574 (600-1½)	NA

NE-4, 16 APR 2026 to 14 MAY 2026

NE-4, 16 APR 2026 to 14 MAY 2026