

WAAS CH 97701 W10A	APP CRS 100°	Rwy Ldg TDZE Apt Elev	5003 857 868
--	------------------------	-----------------------------	---

RNAV (GPS) RWY 10

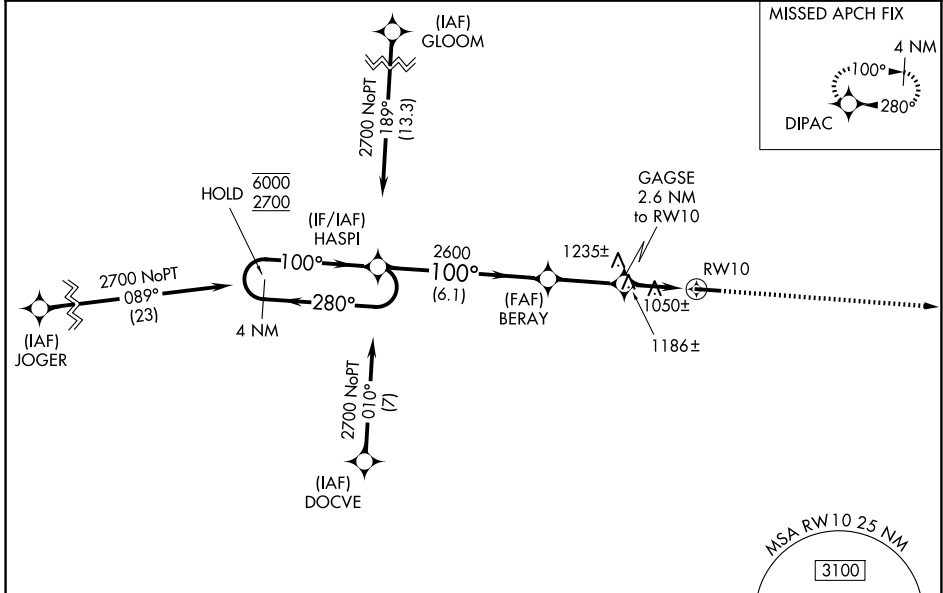
FAIRFIELD COUNTY (L.H.Q)

RNP APCH - GPS.

⚠ Rwy 10 helicopter visibility reduction below 3/4 SM NA. When local altimeter setting not received, use Rickenbacker Intl altimeter setting and increase all MDAs 60 feet and LNAV visibility Cat C 1/8 SM, and Circling visibility Cat C 1/4 SM. When Circling Rwy 28 at night, operational VGSI required, remain on or above VGSI glidepath until threshold.

MISSED APPROACH:
Climb to 2800 direct
DIPAC and hold.

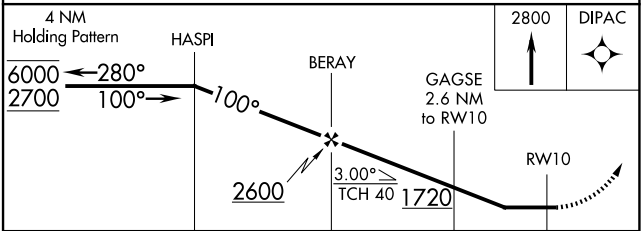
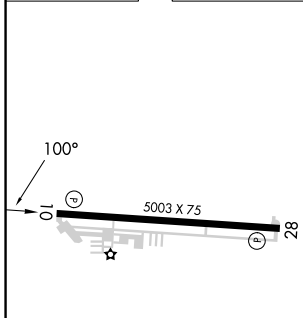
ASOS 118.375	COLUMBUS APP CON 134.0 279.6	CLNC DEL 121.65	UNICOM 122.725 (CTAF) 0
------------------------	--	---------------------------	-----------------------------------



EC-2, 16 APR 2026 to 14 MAY 2026

EC-2, 16 APR 2026 to 14 MAY 2026

ELEV	868	TDZE	857
------	-----	------	-----



CATEGORY	A	B	C	D
LP MDA	1300-1	443 (500-1)	1300-1 3/8 443 (500-1 3/8)	NA
LNAV MDA	1440-1	583 (600-1)	1440-1 3/4 583 (600-1 3/4)	NA
CIRCLING	1500-1 632 (700-1)	1540-1 672 (700-1)	1620-2 1/4 752 (800-2 1/4)	NA

REIL Rws 10 and 28 **0**
MIRL Rwy 10-28 **0**