

WAAS CH 69628 W28A	APP CRS 280°	Rwy Ldg TDZE Apt Elev	5003 868 868
--	------------------------	-----------------------------	---

RNAV (GPS) RWY 28

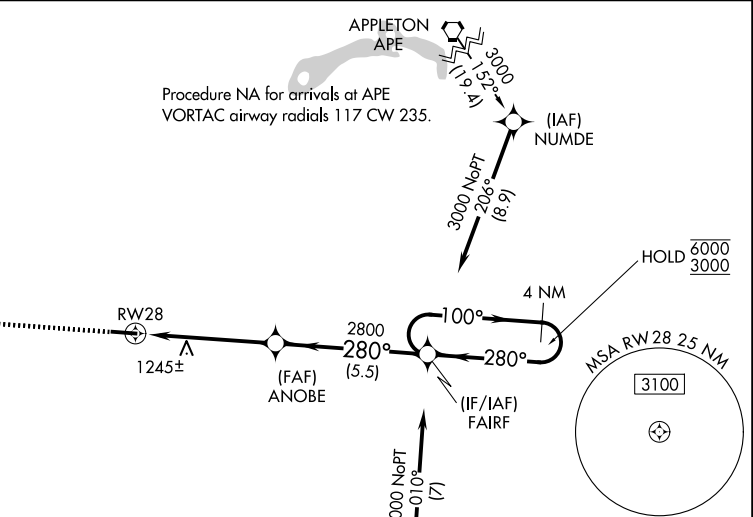
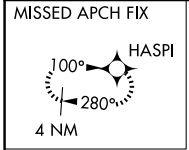
FAIRFIELD COUNTY (L.H.Q.)

RNP APCH - GPS.

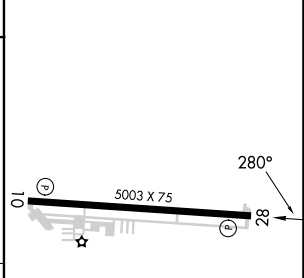
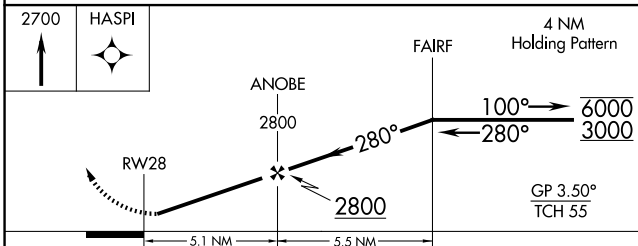
⚠ Rwy 28 helicopter visibility reduction below 1 SM NA. For uncompensated Baro-VNAV systems, LNAV/VNAV NA below -20°C or above 54°C. Baro-VNAV NA when using Rickenbacker Intl altimeter setting. When local altimeter setting not received, use Rickenbacker Intl altimeter setting; increase LPV DA to 1411 feet and all visibilities ¼ SM; increase LNAV/VNAV DA to 1549 feet and all visibilities ¼ SM; increase all MDAs 60 feet. Straight-in Rwy 28 at night, operational VGSI required, remain on or above VGSI glidepath until threshold. When Circling Rwy 28 at night, operational VGSI required, remain on or above VGSI glidepath until threshold.

MISSED APPROACH:
Climb to 2700 direct HASPI and hold.

ASOS 118.375	COLUMBUS APP CON 134.0 279.6	CLNC DEL 121.65	UNICOM 122.725 (CTAF) 0
------------------------	--	---------------------------	-----------------------------------



ELEV	868	TDZE	868
------	-----	------	-----



CATEGORY	A	B	C	D
LPV DA	1362-1 3/8	494 (500-1 3/8)		NA
LNAV/VNAV DA	1500-1 3/4	632 (700-1 3/4)		NA
LNAV MDA	1500-1	632 (700-1)		NA
CIRCLING	1500-1 632 (700-1)	1540-1 672 (700-1)		NA

REIL Rwy 10 and 28 0

MIRL Rwy 10-28 0

EC-2, 16 APR 2026 to 14 MAY 2026

EC-2, 16 APR 2026 to 14 MAY 2026