

WAAS CH <b>49131</b> <b>W17A</b>	APP CRS <b>166°</b>	Rwy Ldg <b>4010</b> TDZE <b>1522</b> Apt Elev <b>1523</b>
--	------------------------	---

# RNAV (GPS) RWY 17

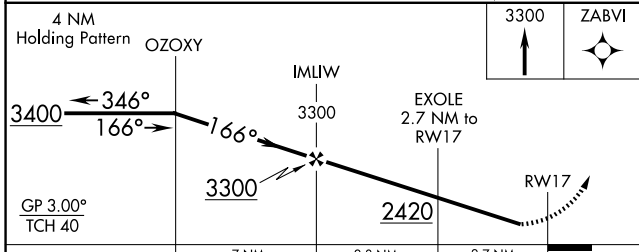
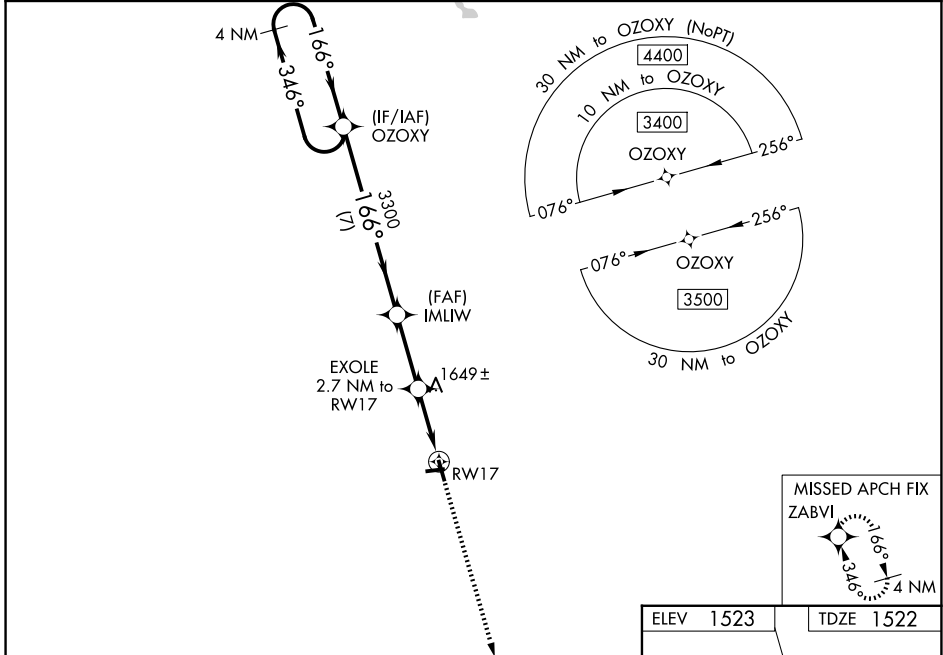
LANGLADE COUNTY (AIG)

RNP APCH - GPS.

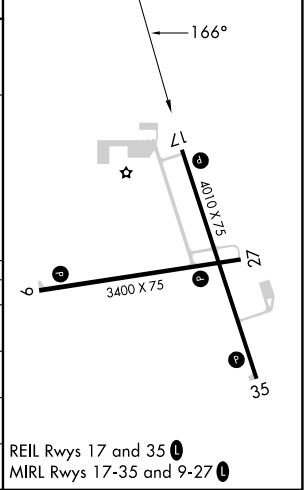
**⚠** Baro-VNAV NA when using AUV altimeter setting. For uncompensated Baro-VNAV systems, LNAV/VNAV NA below -18°C or above 54°C. Procedure NA at night. Helicopter visibility reduction below 1 SM NA. When local altimeter setting not received, use AUV altimeter setting and increase LPV DA to 1877 feet and all visibilities ¼ SM. Increase LNAV/VNAV DA to 2029 feet and all visibilities ¼ SM. Increase all MDAs 120 feet and LNAV visibility Cat C/D ¼ SM, and Circling visibility Cat C/D ½ SM.

**MISSED APPROACH:**  
Climb to 3300 direct ZABVI and hold.

AWOS-3 <b>119.075</b>	MINNEAPOLIS CENTER <b>124.4 317.7</b>	UNICOM <b>122.8 (CTAF)</b>
--------------------------	--	-------------------------------



ELEV 1523	TDZE 1522
-----------	-----------



CATEGORY	A	B	C	D
LPV DA	1772-1		250 (300-1)	
LNAV/VNAV DA	1924-1⅓		402 (400-1⅓)	
LNAV MDA	1920-1	398 (400-1)	1920-1⅓	398 (400-1⅓)
CIRCLING	2120-1	597 (600-1)	2260-2 737 (800-2)	2260-2¼ 737 (800-2¼)

EC-3, 16 APR 2026 to 14 MAY 2026

EC-3, 16 APR 2026 to 14 MAY 2026