

WAAS CH 45732 W35A	APP CRS 346°	Rwy Ldg TDZE Apt Elev	4010 1522 1523
--	------------------------	-----------------------------	---

RNAV (GPS) RWY 35

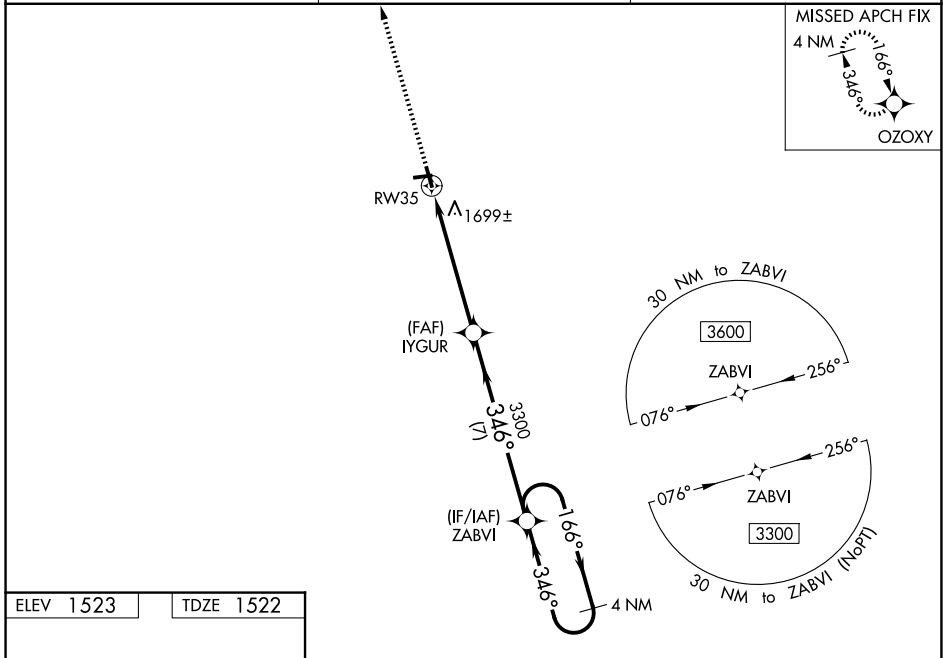
LANGLADE COUNTY (AIG)

RNP APCH - GPS.

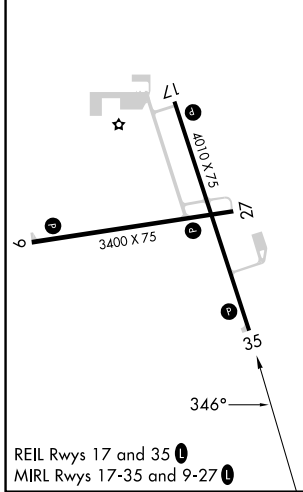
▼ For uncompensated Baro-VNAV systems, LNAV/VNAV NA below -18°C or above 54°C .
 ▲ Baro-VNAV and VDP NA when using AUW altimeter setting. Helicopter visibility reduction below ¾ SM NA. When local altimeter setting not received, use AUW altimeter setting and increase LPV DA to 1877 feet and all visibilities ¼ SM. Increase LNAV/VNAV DA to 2124 feet and all visibilities ⅓ SM. Increase all MDAs 120 feet and LNAV visibility Cat C/D ⅓ SM, and Circling visibility Cat C/D ½ SM.

MISSED APPROACH:
Climb to 3400 direct OZOXY and hold.

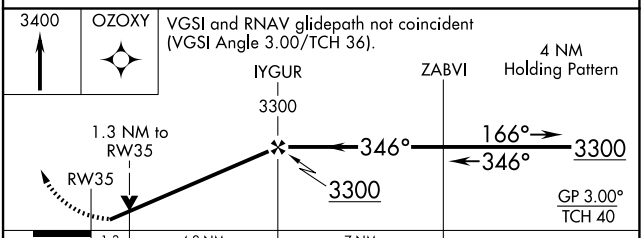
AWOS-3 119.075	MINNEAPOLIS CENTER 124.4 317.7	UNICOM 122.8 (CTAF) 1
--------------------------	--	--



ELEV 1523	TDZE 1522
-----------	-----------



REIL Rwy 17 and 35 **1**
 MIRL Rwy 17-35 and 9-27 **1**



CATEGORY	A	B	C	D
LPV DA		1772-1	250 (300-1)	
LNAV/VNAV DA		2019-1¾	497 (500-1¾)	
LNAV MDA	1960-1	438 (500-1)	1960-1¼	438 (500-1¼)
CIRCLING	2120-1	597 (600-1)	2260-2 737 (800-2)	2260-2¼ 737 (800-2¼)

EC-3, 16 APR 2026 to 14 MAY 2026

EC-3, 16 APR 2026 to 14 MAY 2026