

WAAS CH 82130 W09A	APP CRS 085°	Rwy Ldg 3400 TDZE 1522 Apt Elev 1523
--	------------------------	---

RNAV (GPS) RWY 9

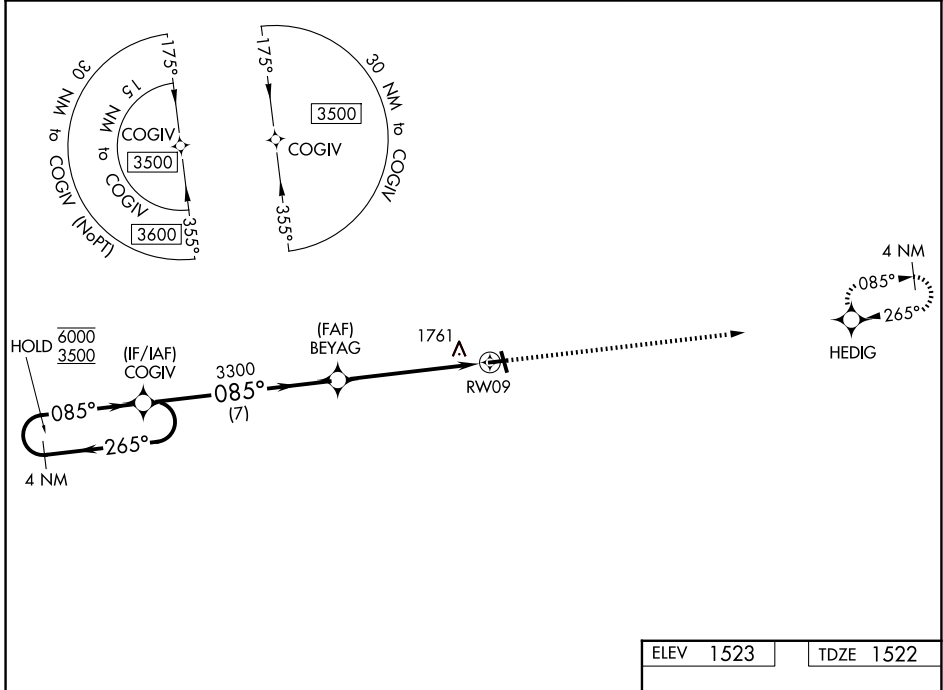
LANGLADE COUNTY (AIG)

RNP APCH.

▽ Rwy 9 helicopter visibility reduction below 3/4 SM NA.
▲ For uncompensated Baro-VNAV systems, LNAV/VNAV NA below -18C or above 54°C.

MISSED APPROACH:
Climb to 3400 direct HEDIG and hold.

AWOS-3 119.075	MINNEAPOLIS CENTER 124.4 317.7	UNICOM 122.8 (CTAF) 0
--------------------------	--	---------------------------------



EC-3, 16 APR 2026 to 14 MAY 2026

EC-3, 16 APR 2026 to 14 MAY 2026

