

APP CRS	Rwy Ldg 4402
282°	TDZE 311
	Apt Elev 319

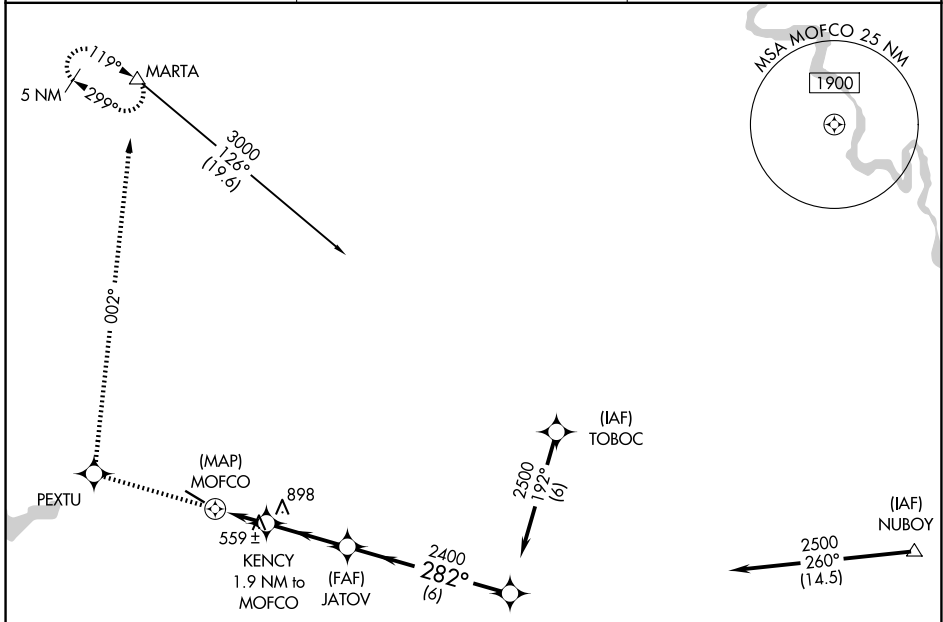
RNAV (GPS) RWY 30

HART (3R4)

RNP APCH.
 ▼ Rwy 30 helicopter visibility reduction below 3/4 SM NA.
 ▲ NA Use Fort Polk altimeter setting; when not received, use Natchitoches altimeter setting and increase all MDA 20 feet.

MISSED APPROACH: Climb to 4500 direct PEXTU and right turn via track 002° to MARTA and hold, continue climb in hold to 4500.

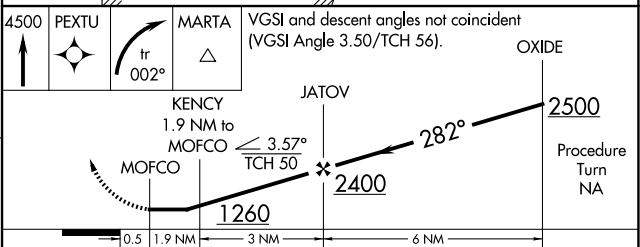
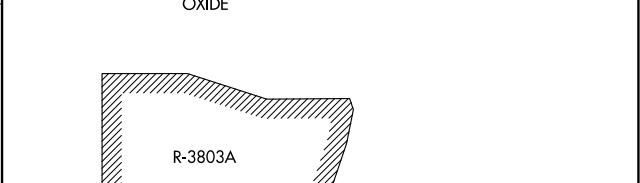
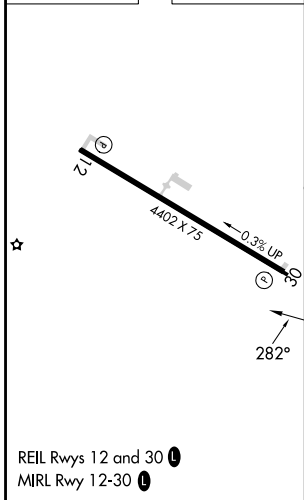
MAKS APP CON 123.7 261.3	GCO 135.075	UNICOM 122.8 (CTAF)
------------------------------------	-----------------------	-------------------------------



SC-4, 16 APR 2026 to 14 MAY 2026

SC-4, 16 APR 2026 to 14 MAY 2026

ELEV 319	TDZE 311
----------	----------



REIL Rws 12 and 30
 MIRL Rwy 12-30

CATEGORY	A	B	C	D
LNAV MDA	900-1	589 (600-1)	900-1 3/4 589 (600-1 3/4)	NA