

WAAS CH 70614 W17A	APP CRS 172°	Rwy Idg TDZE Apt Elev	5502 2176 2189
--	------------------------	-----------------------------	---

RNAV (GPS) RWY 17

WEST WOODWARD (WWR)

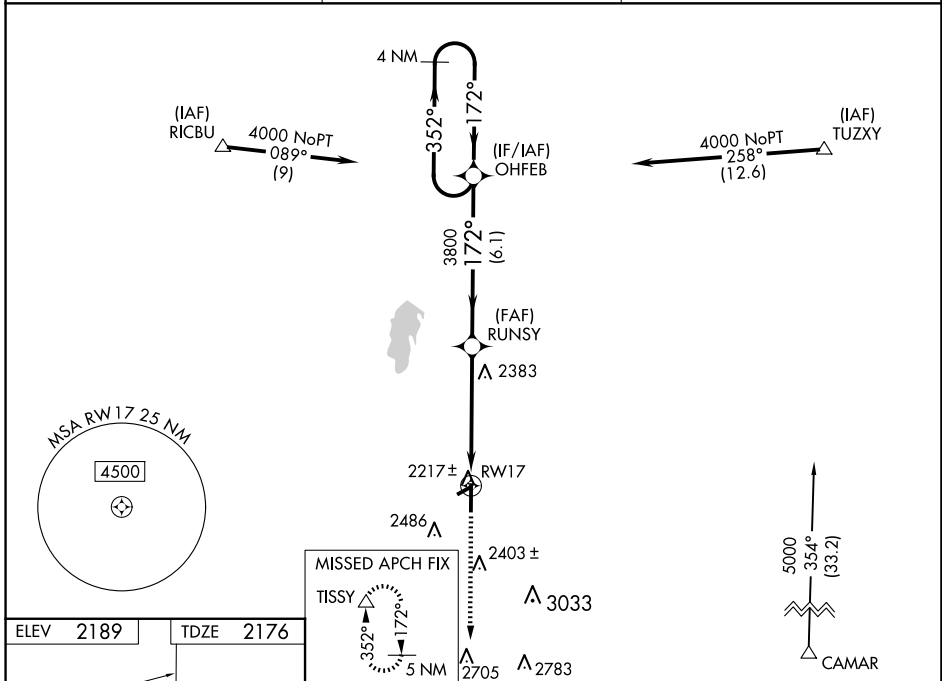
RNP APCH

Baro-VNAV and VDP NA when using Gage altimeter setting. For uncompensated Baro-VNAV systems, LNAV/VNAV NA below -19°C or above 54°C. When local altimeter setting not received, use Gage altimeter setting and increase all DA/MDA 40 feet. Inop table does not apply. Circling Rwy 5, 23 NA at night.

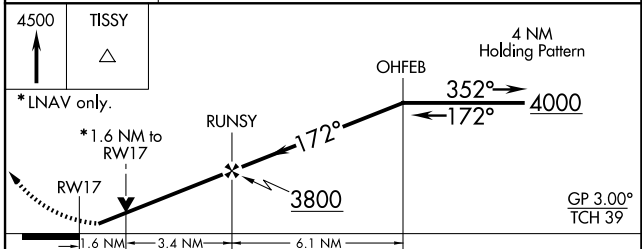
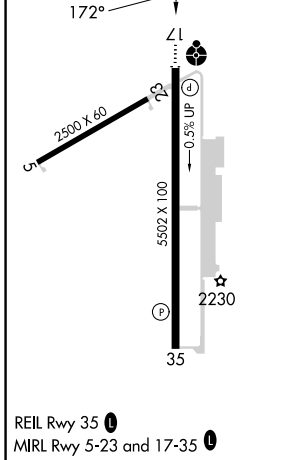
ODALS

MISSED APPROACH: Climb to 4500 direct TISSY and hold.

AWOS-3 118.425	KANSAS CITY CENTER 126.95 379.2	UNICOM 122.8 (CTAF)
--------------------------	---	-------------------------------



ELEV 2189	TDZE 2176
-----------	-----------



CATEGORY	A	B	C	D
LPV DA	2426-1 250 (300-1)			
LNAV/VNAV DA	2572-1½ 396 (400-1½)			
LNAV MDA	2700-1	524 (600-1)	2700-1½ 524 (600-1½)	2700-1¾ 524 (600-1¾)
CIRCLING	2700-1 511 (600-1)	2860-1 671 (700-1)	2940-2¼ 751 (800-2¼)	2960-2½ 771 (800-2½)

SC-1, 16 APR 2026 to 14 MAY 2026

SC-1, 16 APR 2026 to 14 MAY 2026