

WAAS CH 40034 W01A	APP CRS 006°	Rwy Ldg TDZE Apt Elev	5002 522 522
--	------------------------	-----------------------------	---

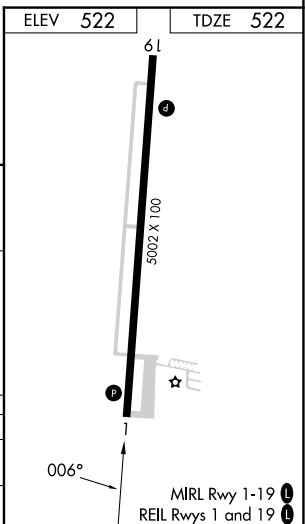
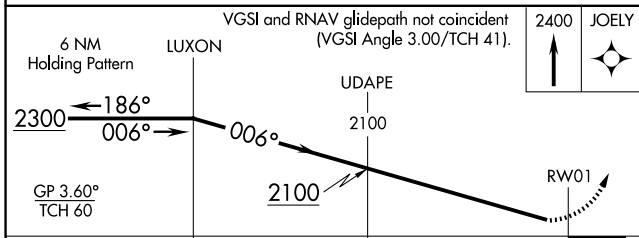
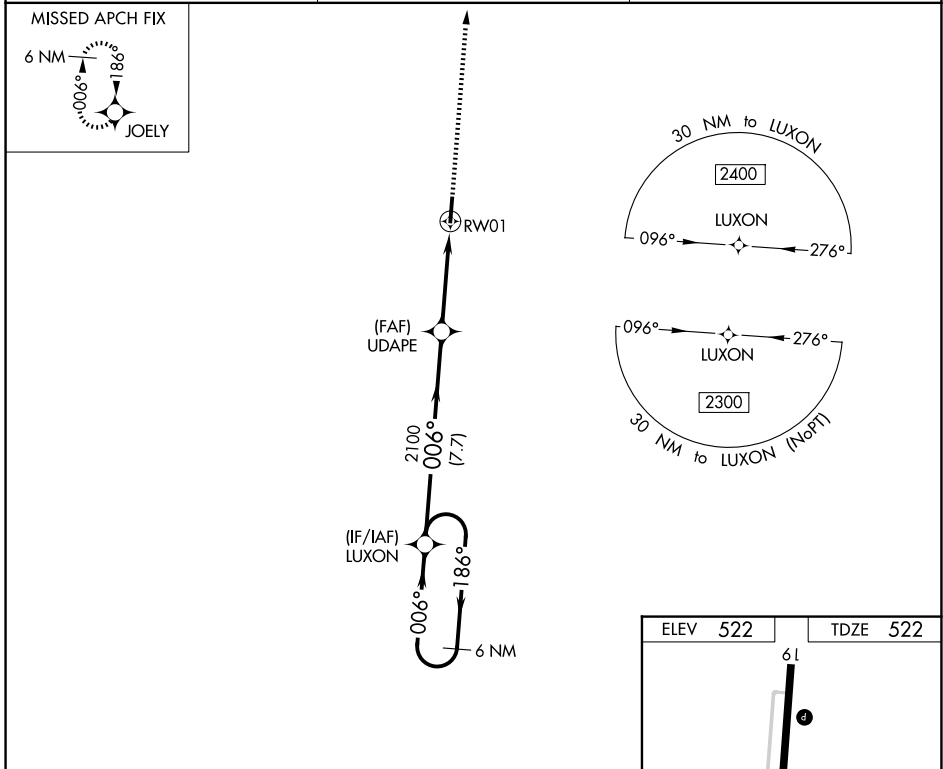
RNAV (GPS) Z RWY 1

MAYFIELD GRAVES COUNTY (M25)

⚠️ NA Baro-VNAV NA when using Paducah altimeter setting. For uncompensated Baro-VNAV systems, LNAV/VNAV NA below -16°C (4°F) or above 54°C (130°F).
 DME/DME RNP-0.3 NA. When local altimeter setting not received, use Paducah altimeter setting and increase all DA 61 feet; increase LNAV/VNAV Cts A and B visibility ¼ mile.
 Rwy 1, 19 helicopter visibility reduction below 1 SM NA. Procedure NA at night.

MISSED APPROACH:
 Climb to 2400 direct JOELY and hold.

AWOS-3 120.625	MEMPHIS CENTER 133.65 292.15	UNICOM 122.8 (CTAF) ①
--------------------------	--	---------------------------------



CATEGORY	A	B	C	D
LPV DA	820-1	298 (300-1)		NA
LNAV/VNAV DA	932-1½	410 (500-1½)		NA

SE-1, 16 APR 2026 to 14 MAY 2026

SE-1, 16 APR 2026 to 14 MAY 2026