

WAAS CH 42830 W21A	APP CRS 213°	Rwy Ldg TDZE 1007 Apt Elev 1019	5000
--	------------------------	---	-------------

RNAV (GPS) RWY 21

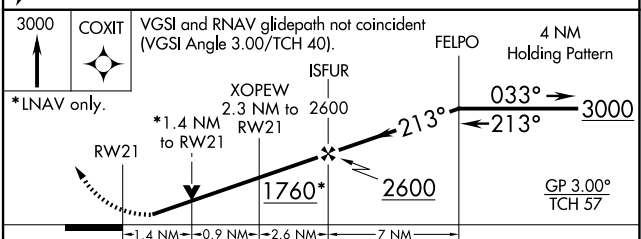
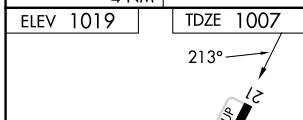
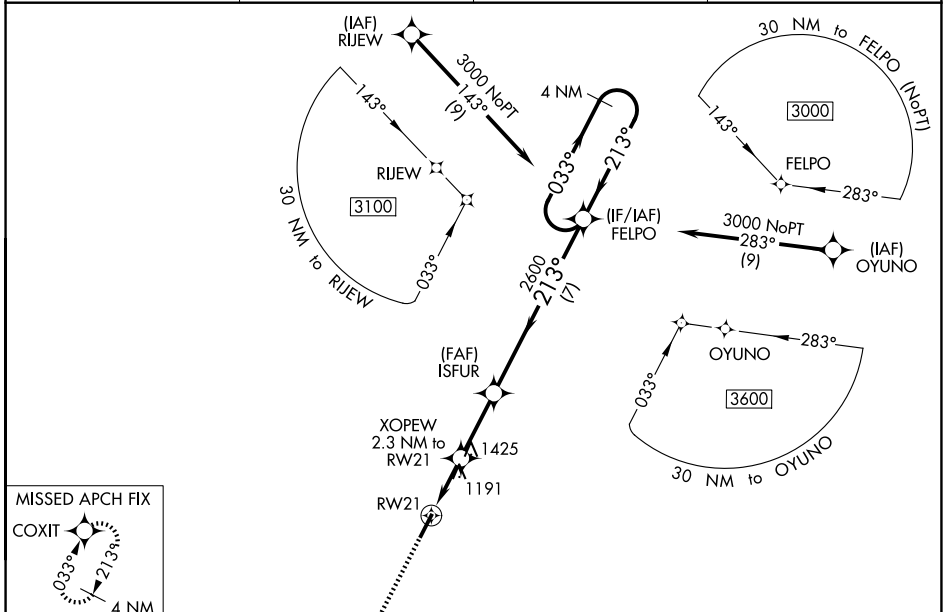
MOUNT STERLING/MONTGOMERY COUNTY (IOB)

RNP APCH - GPS.

⚠ For uncompensated Baro-VNAV systems, LNAV/VNAV NA below -17°C or above 54°C. When local altimeter setting not received, use Lexington altimeter setting and increase LPV DA to 1332 feet and all visibilities ¼ SM. Increase LNAV/VNAV DA to 1555 feet and all visibilities ¼ SM. Increase all MDAs 80 feet and LNAV visibility Cat C/D ½ SM, and Circling visibility Cat C/D ¼ SM. Baro-VNAV and VDP NA when using Lexington altimeter setting. Rwy 21 helicopter visibility reduction below ¼ SM NA.

MISSED APPROACH: Climb to 3000 direct COXIT and hold.

AWOS-3 120.675	LEXINGTON APP CON 120.15 259.3	GCO 121.72	CTAF 122.8
--------------------------	--	----------------------	----------------------



CATEGORY	A	B	C	D
LPV DA		1257-¾	250 (300-¾)	
LNAV/VNAV DA		1480-1½	473 (500-1½)	
LNAV MDA	1460-1	453 (500-1)	1460-1½	453 (500-1½)
CIRCLING	1540-1	1560-1	1740-2	1740-2¼
	521 (600-1)	541 (600-1)	721 (800-2)	721 (800-2¼)

MRL Rwy 3-21 **Ⓛ**
REIL Rws 3 and 21 **Ⓛ**

SE-1, 16 APR 2026 to 14 MAY 2026

SE-1, 16 APR 2026 to 14 MAY 2026