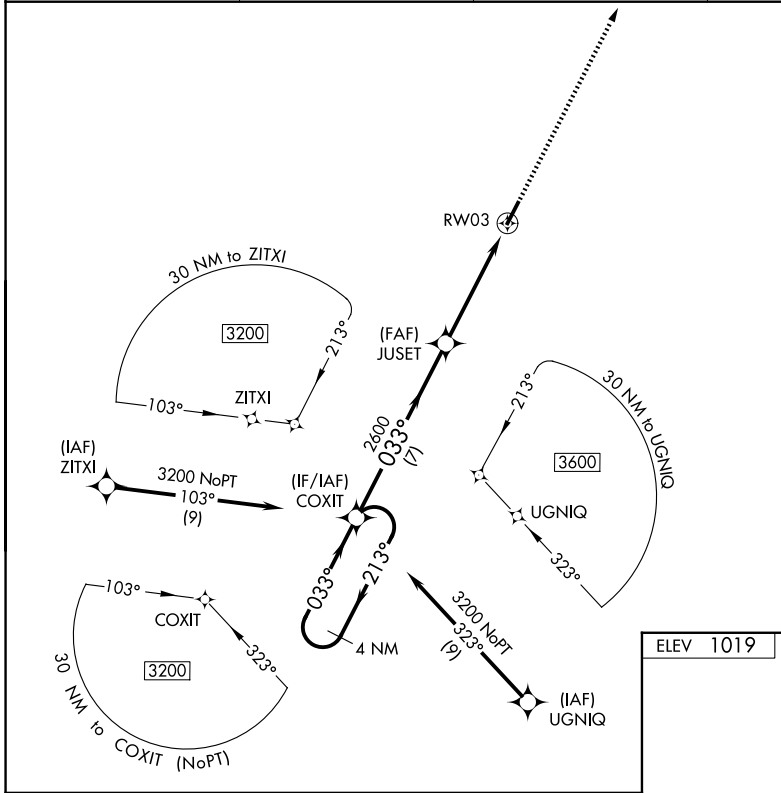


WAAS CH 81933 W03A	APP CRS 033°	Rwy Ldg TDZE Apt Elev	5000 1019 1019
--	------------------------	-----------------------------	---

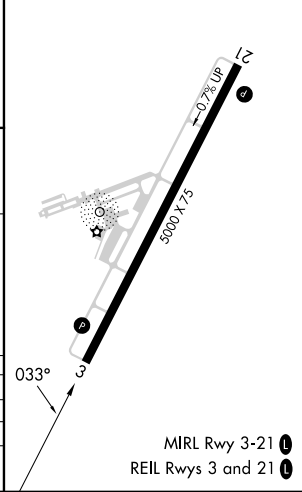
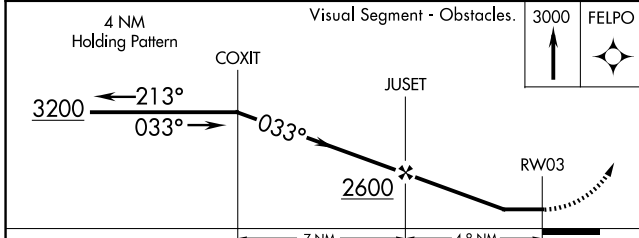
RNAV (GPS) RWY 3

MOUNT STERLING/MONTGOMERY COUNTY (IOB)

DME/DMA RNP-0.3 NA. When local altimeter setting not received, use Lexington altimeter setting and increase all MDA 80 feet and all visibilities ¼ mile. Helicopter visibility reduction below ¾ SM NA.		MISSED APPROACH: Climb to 3000 direct FELPO and hold.	
AWOS-3 120.675	LEXINGTON APP CON 120.15 259.3	GCO 121.72	CTAF 122.8 0



ELEV 1019	TDZE 1019
-----------	-----------



CATEGORY	A	B	C	D
LP MDA	1540-1	521 (600-1)	1540-1½	521 (600-1½)
LNAV MDA	1560-1	541 (600-1)	1560-1¾	541 (600-1¾)
CIRCLING	1560-1	541 (600-1)	1740-2	1740-2¼
			721 (800-2)	721 (800-2¼)

SE-1, 16 APR 2026 to 14 MAY 2026

SE-1, 16 APR 2026 to 14 MAY 2026