

WAAS CH <b>65616</b> <b>W35A</b>	APP CRS <b>354°</b>	Rwy Ldg TDZE Apt Elev	<b>6000</b> <b>3064</b> <b>3071</b>
--	------------------------	-----------------------------	---

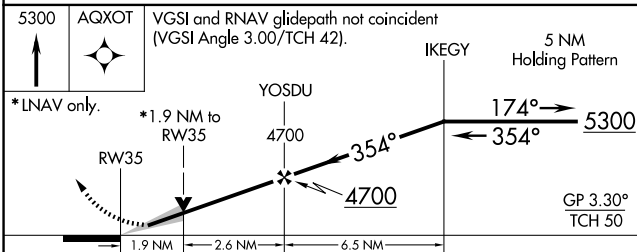
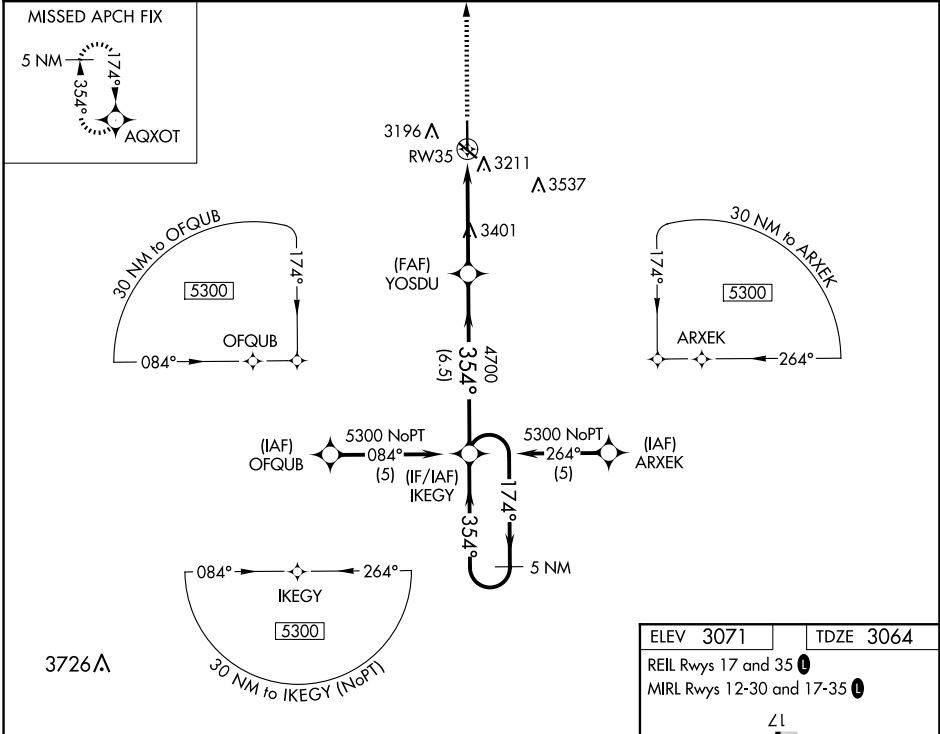
# RNAV (GPS) RWY 35

ULYSSES (ULS)

**▼** DME/DME RNP-0.3 NA. When local altimeter setting not received, use Garden City altimeter setting and increase LPV DA to 3485 and visibility 3/8 mile all Cats, and all MDA 120 feet; increase visibility LNAV Cats B/C and Circling Cats B/C 1/4 mile. VDP NA with Garden City altimeter setting.

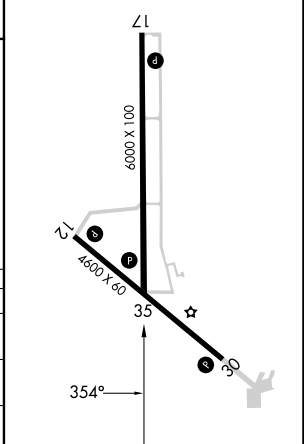
**▲** NA MISSED APPROACH: Climb to 5300 direct AQXOT and hold.

AWOS-3PT <b>118.95</b>	KANSAS CITY CENTER <b>125.2 285.425</b>	UNICOM <b>122.8 (CTAF)</b>
---------------------------	--	-------------------------------



ELEV 3071	TDZE 3064
-----------	-----------

REIL Rwy 17 and 35  
MIRL Rwy 12-30 and 17-35



CATEGORY	A	B	C	D
LPV DA	3375-1 311 (400-1)			NA
LNAV MDA	3700-1	636 (700-1)	3700-1 3/4 636 (700-1 3/4)	NA
<b>C</b> CIRCLING	3740-1	669 (700-1)	3900-2 1/2 829 (900-2 1/2)	NA

NC-2, 16 APR 2026 to 14 MAY 2026

NC-2, 16 APR 2026 to 14 MAY 2026